

# MEDIUM DUTY TRUCK MODELS

---

Vehicles in this catalog are arranged alphabetically first by truck model and then numerically by series within the specified model. The following is a model-series breakdown as set forth by the respective OEM.

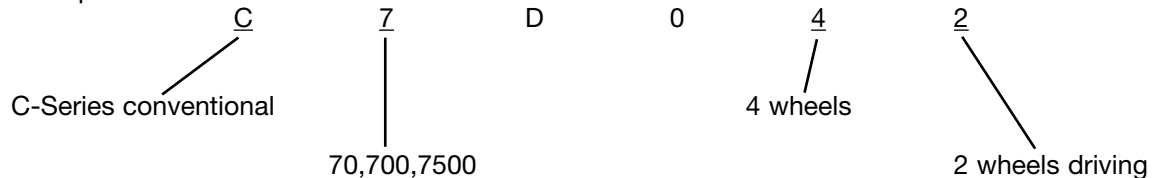
## FORD

<u>Model</u>	<u>Series</u>	<u>Vehicle Type</u>
B	500-800 gas	School Bus
B	6000-8000 diesel	School Bus
C	600-800 gas	Tilt Cab
C	6000-8000 diesel	Tilt Cab
CF	600 gas	Import Cab forward
CF	6000 diesel	Import Cab forward
F	600-800 gas	Conventional
F	6000-9000 diesel	Conventional
L, LN	600-900 gas	Conventional set back axle
L, LN	6000-9000 diesel	Conventional set back axle
P	500-600	Parcel Delivery

## GMC/CHEVROLET

B - School Bus	4 - 40,4000,4500 Series
C - Conventional	5 - 50,5000,5500 Series
P - Forward Control Chassis	6 - 60,6000,6500 Series
W - Tilt Cab	7 - 70,7000,7500 Series
	042 - 4 wheels; 2 driving
	064 - 6 wheels; 4 driving

Example:



# INTERNATIONAL

CONTINUED FROM PREVIOUS PAGE

<u>Model</u>	<u>Series</u>	<u>Vehicle Type</u>
Cargostar . . . . .	CO1600 - CO1900 . . . . .	Tilt Cab
	<u>10</u> - gas	
	<u>50</u> - diesel	
Fleetstar . . . . .	2000A . . . . .	Conventional Tractor
	<u>10</u> - gas	
	<u>50</u> - diesel	
Loadstar . . . . .	1600 - 1800 . . . . .	Conventional Truck or School Bus
	<u>00</u> - gas	
	<u>50</u> - diesel	
	<u>03</u> - gas school bus	
	<u>53</u> - diesel school bus	
S-Series . . . . .	S-1700 - 1800 . . . . .	Conventional Truck or School Bus
	<u>23</u> - gas school bus	
	<u>53</u> - diesel school bus	
	<u>24</u> - gas conventional	
	<u>54</u> - diesel conventional	
LFE-Series . . . . .	400 - 900 . . . . .	Tilt Cab (Import)

## GVW CLASSIFICATIONS FOR TRUCKS AND BUSES

<u>Class</u>	<u>Gross Vehicle Weight</u>
3	10,001 - 14,000 lbs.
4	14,001 - 16,000 lbs.
5	16,001 - 19,500 lbs.
6	19,501 - 26,000 lbs.
7	26,001 - 33,000 lbs.
8	33,001 - 55,000 lbs.

---

# KELSEY-HAYES HYDRAULIC DISC BRAKE

## DODGE

FRONT

FMSI NO. 7020-D87

DUAL PISTON  
(2.375" DIA.)

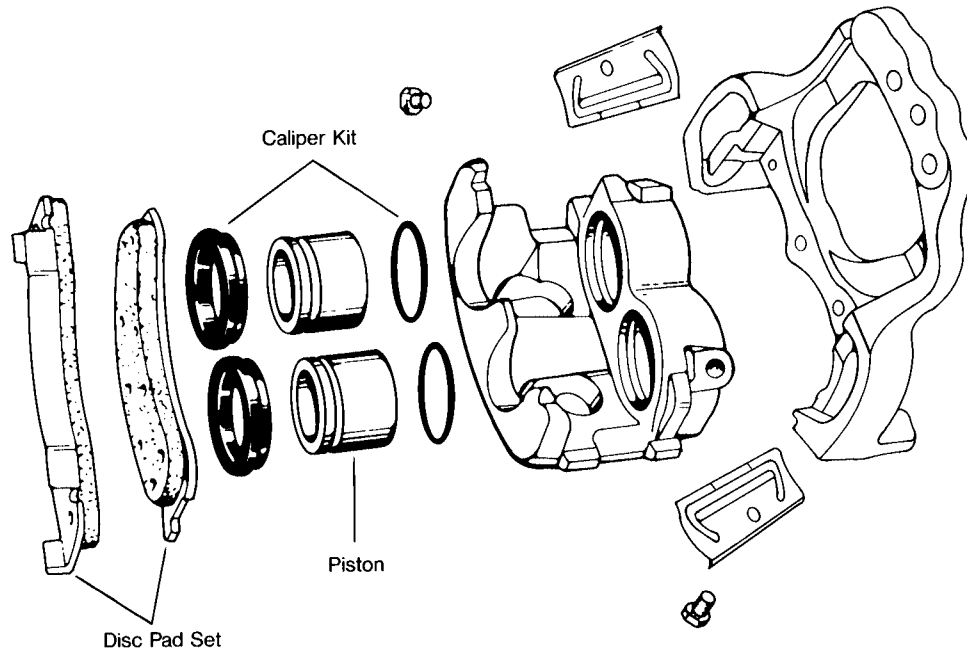


ILLUSTRATION OF TYPICAL COMPONENTS

DISC PAD SET	CALIPER	CALIPER KIT	PISTON	HARDWARE KIT	KEY & SHIM KIT	CALIPER KEY BOLT
MKD87	----	66850	90014S	H5546	---	----

FOR OTHER SYSTEM COMPONENTS SEE APPLICATION SECTION.  
---- NOT AVAILABLE.

# BENDIX HYDRAULIC DISC BRAKE PARTS

GMC-CHEV

FRONT & REAR

FMSI NO. 7108-D184

SINGLE PISTON  
(3.38" DIA.)

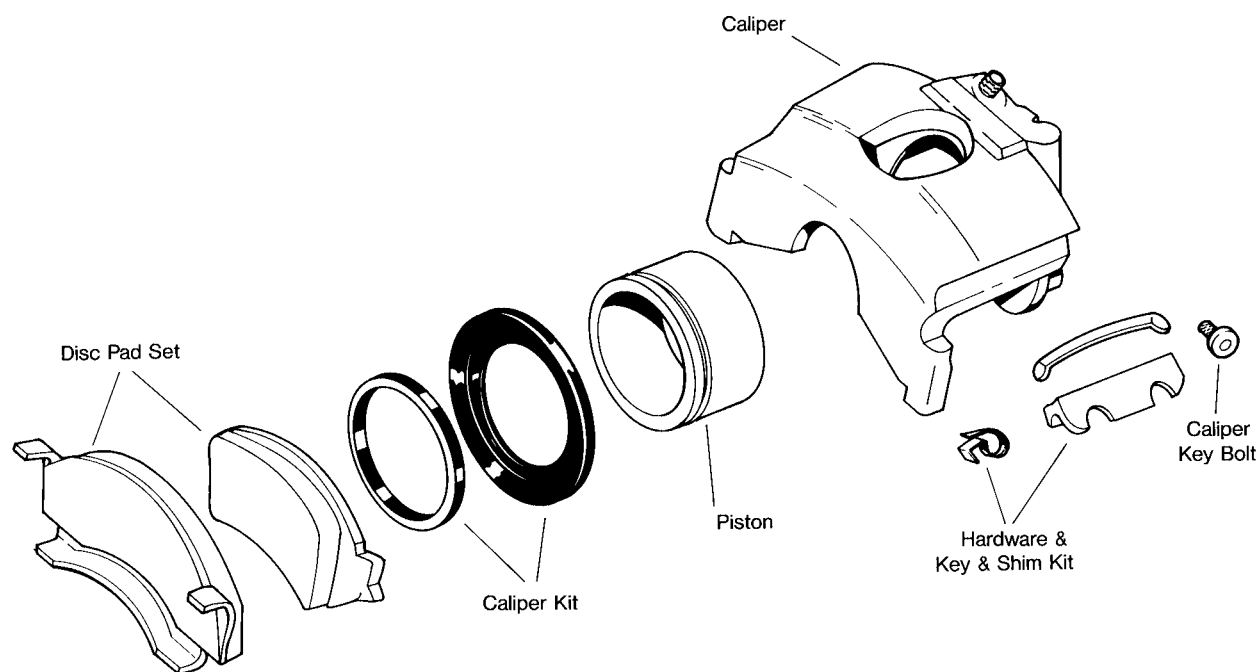


ILLUSTRATION OF TYPICAL COMPONENTS

DISC PAD SET	CALIPER	CALIPER KIT	PISTON	HARDWARE KIT	KEY & SHIM KIT	CALIPER KEY BOLT
MKD184	55200(L) 55199(R)	66780	90021S	H5529	H5529	H5010

FOR OTHER SYSTEM COMPONENTS SEE APPLICATION SECTION.

# BENDIX HYDRAULIC DISC BRAKE INTERNATIONAL

**FRONT & REAR**

**FMSI NO. 7108-D184**

**SINGLE PISTON  
(3.38" DIA.)**

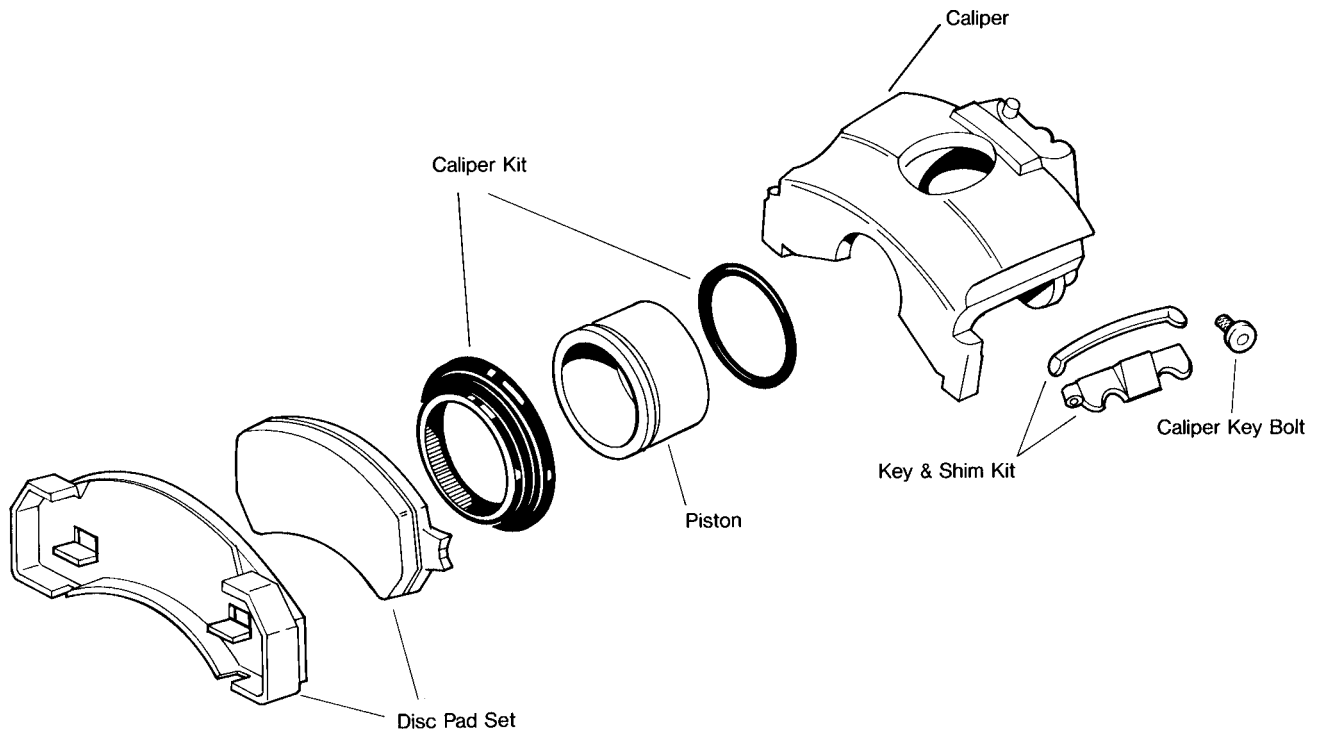


ILLUSTRATION OF TYPICAL COMPONENTS

DISC PAD SET	CALIPER	CALIPER KIT	PISTON	HARDWARE KIT	KEY & SHIM KIT	CALIPER KEY BOLT
MKD184	55098(L) 55099(R)	66780	90021S	H5634	H8203	H5010

FOR OTHER SYSTEM COMPONENTS SEE APPLICATION SECTION.

# BENDIX HYDRAULIC DISC BRAKE INTERNATIONAL

**FRONT & REAR**

**FMSI NO. 7108-D184**

**DUAL PISTON  
(2.60" DIA.)**

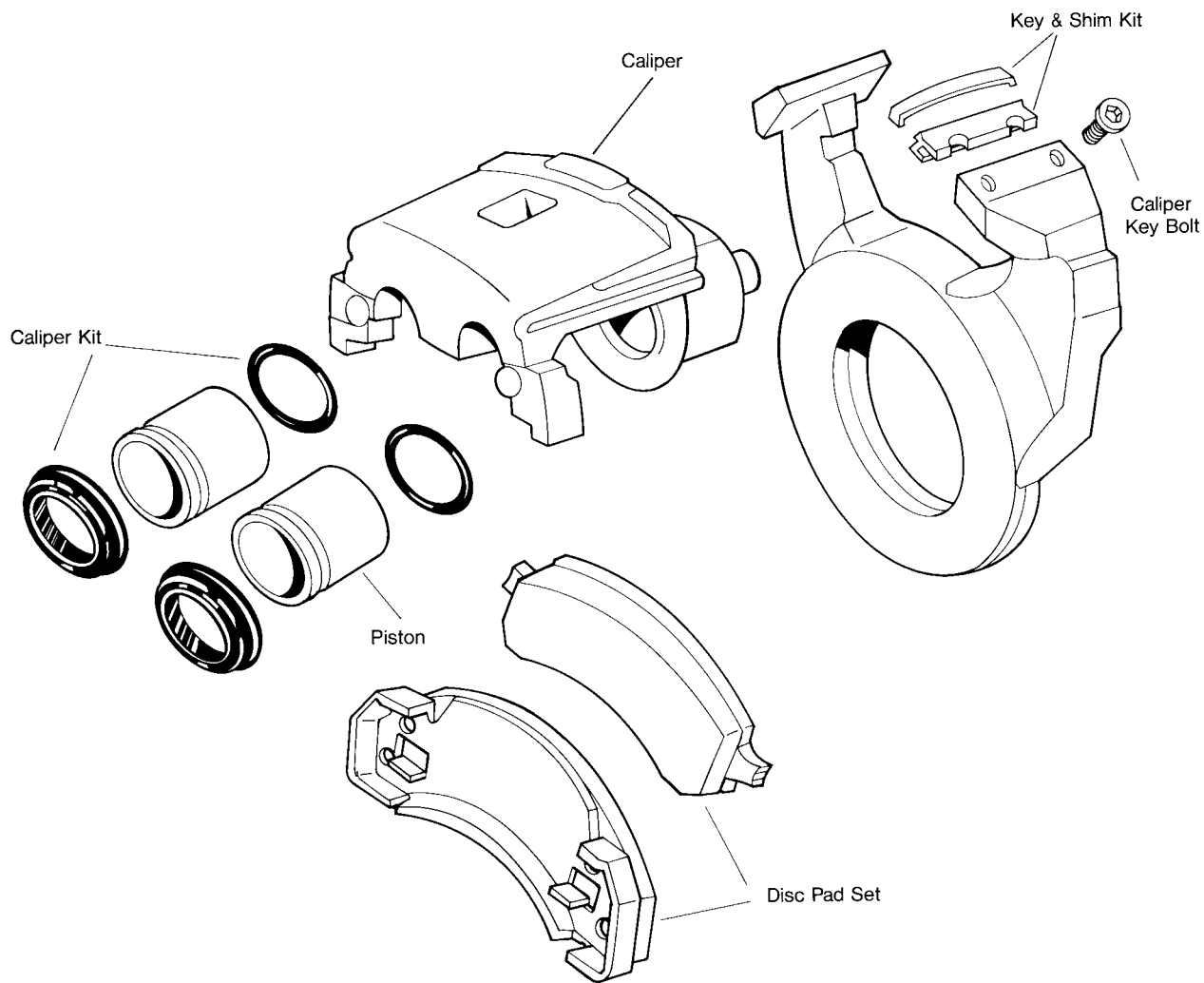


ILLUSTRATION OF TYPICAL COMPONENTS

DISC PAD SET	CALIPER	CALIPER KIT	PISTON	HARDWARE KIT	KEY & SHIM KIT	CALIPER KEY BOLT
MKD184 55314 <sup>51</sup>	55245 or 66396	66549 or	90055S	H5634	H8203	H5010

FOR OTHER SYSTEM COMPONENTS SEE APPLICATION SECTION.

<sup>51</sup> 55314 HAS PHENOLIC PISTONS. FOR CALIPERS WITH STEEL PISTONS USE 55245.

# BENDIX HYDRAULIC DISC BRAKE

INTERNATIONAL

GMC-CHEV

FRONT & REAR

FMSI NO. 7142-D225

DUAL PISTON  
(2.88" DIA.)

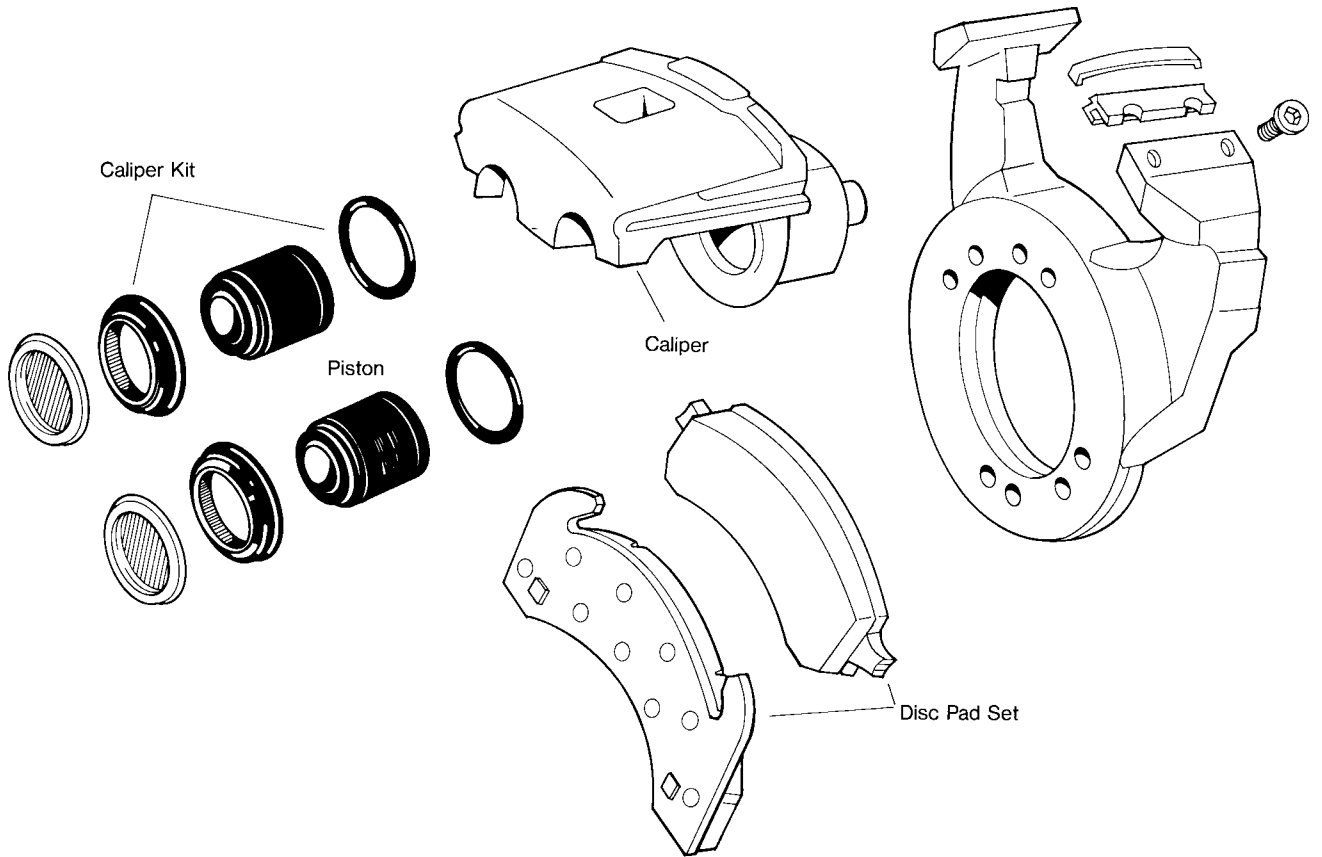


ILLUSTRATION OF TYPICAL COMPONENTS

DISC PAD SET	CALIPER	CALIPER KIT	PISTON	HARDWARE KIT	KEY & SHIM KIT	CALIPER KEY BOLT
MKD225	55250	66381 (New Design Caliper) 66365 (Old Design Caliper)	90096P (New Design Caliper) 90070P (Old Design Caliper)	H5635	H8203	H5010

FOR OTHER SYSTEM COMPONENTS SEE APPLICATION SECTION.

# DAYTON HYDRAULIC DISC BRAKE

FORD

GMC-CHEV

FRONT & REAR

FMSI NO. 7141-D224

DUAL PISTON  
(2.50" DIA.)

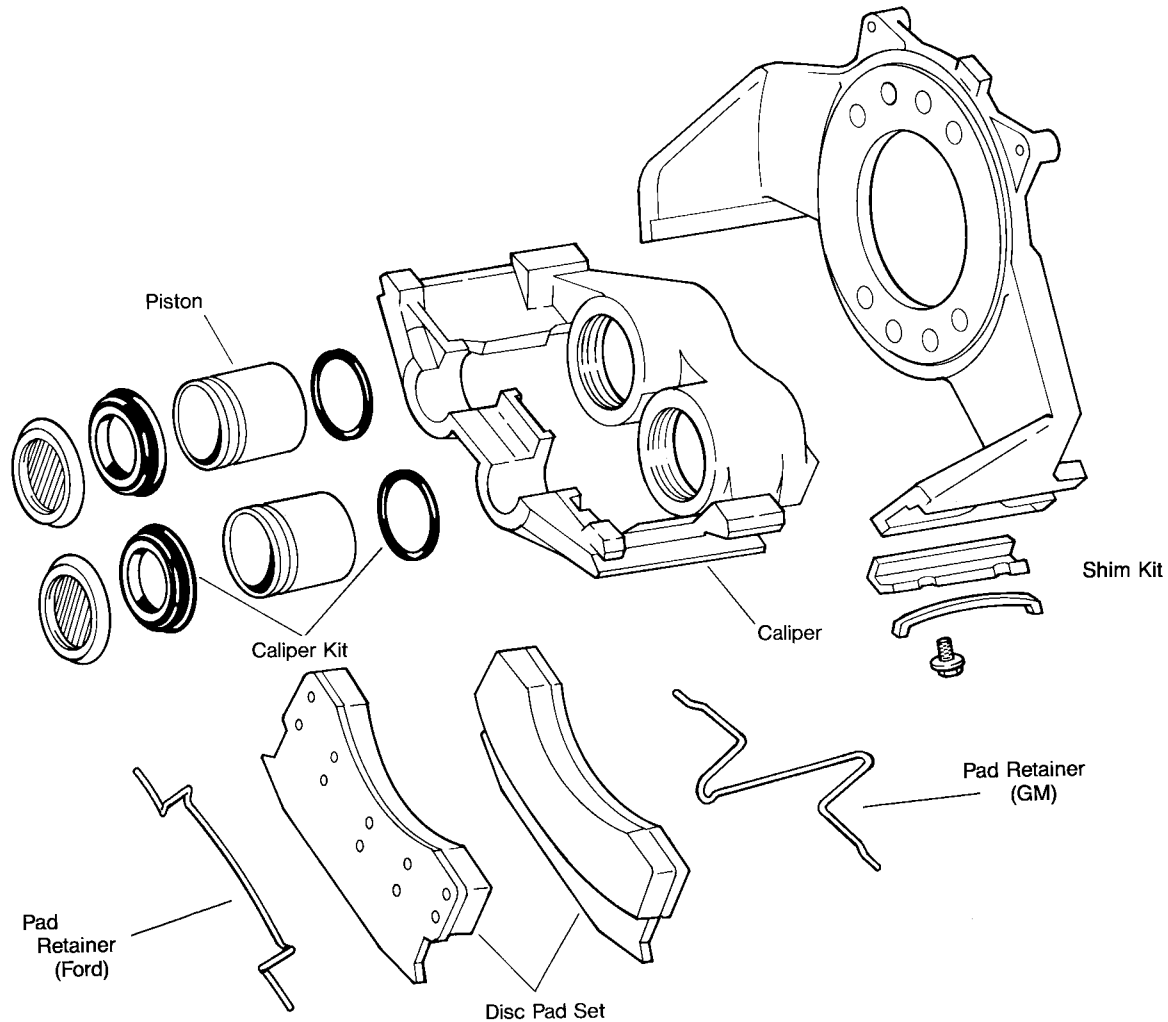


ILLUSTRATION OF TYPICAL COMPONENTS

DISC PAD SET	CALIPER	CALIPER KIT	PISTON	HARDWARE KIT	KEY & SHIM KIT	CALIPER KEY BOLT	PAD RETAINER
MKD224	55251	66504	90071A	H5636	H5664	----	H5422(GM)

FOR OTHER SYSTEM COMPONENTS SEE APPLICATION SECTION.  
 - - - - NOT AVAILABLE.



# DAYTON HYDRAULIC DISC BRAKE

FORD

FRONT & REAR

FMSI NO. 7149-D236

DUAL PISTON  
(2.88" DIA.)

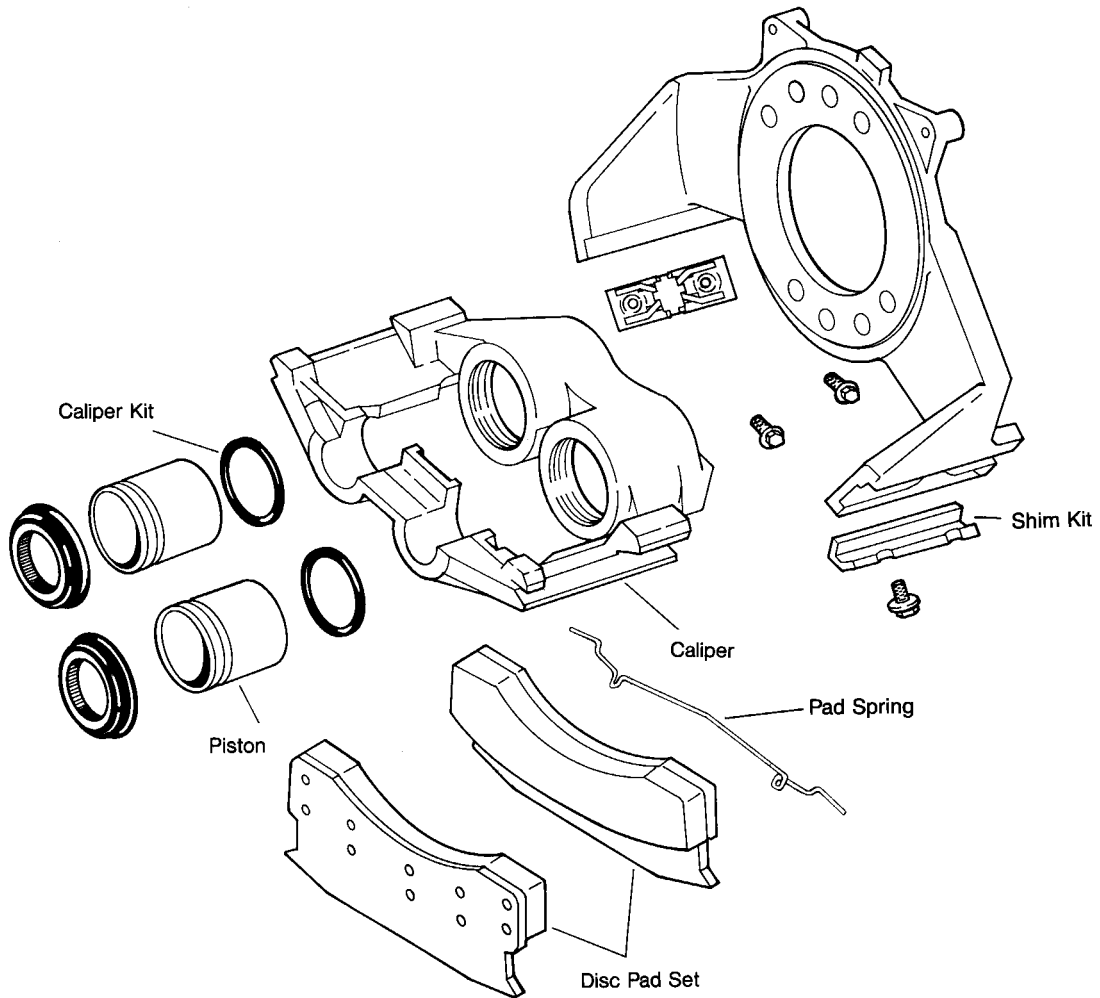


ILLUSTRATION OF TYPICAL COMPONENTS

DISC PAD SET	CALIPER	CALIPER KIT	PISTON	HARDWARE KIT	KEY & SHIM KIT	CALIPER KEY BOLT
MKD236	55252	66503	90072A	H5637 ('86-'83)	H5663	----

FOR OTHER SYSTEM COMPONENTS SEE APPLICATION SECTION.  
---- NOT AVAILABLE.

# VARGA HYDRAULIC DISC BRAKE PARTS

## FORD - CARGO

**FRONT**

**7812-D327  
7814-D379**

**DUAL PISTON  
(2.66" DIA.)**

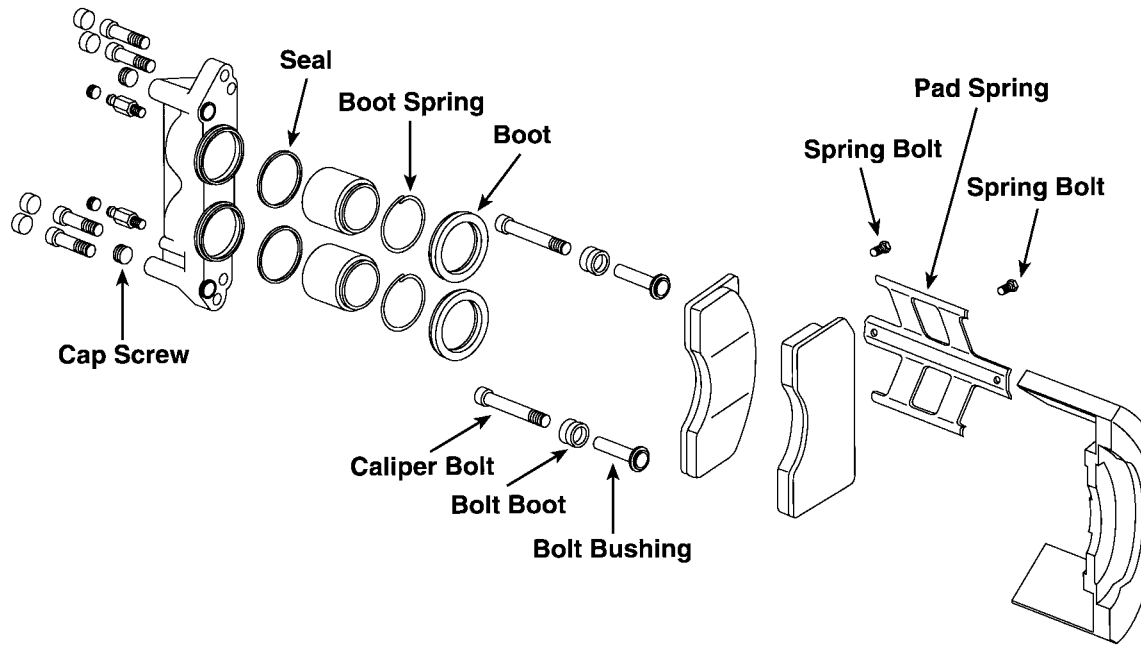


ILLUSTRATION OF TYPICAL COMPONENTS

DISC PAD SET	CALIPER	CALIPER KIT	PISTON	HARDWARE KIT	KEY & SHIM KIT	CALIPER KEY BOLT
MKD379	----	66351	----	----	----	----

FOR OTHER SYSTEM COMPONENTS SEE APPLICATION SECTION.  
---- NOT AVAILABLE.

# BENDIX FRONT DRUM BRAKE

DODGE

FORD

**AUTOMATIC  
ADJUSTMENT**

FMSI NO.

2060-398  
2075-33

SIZE

14 x 2 1/2  
12 1/8 x 2

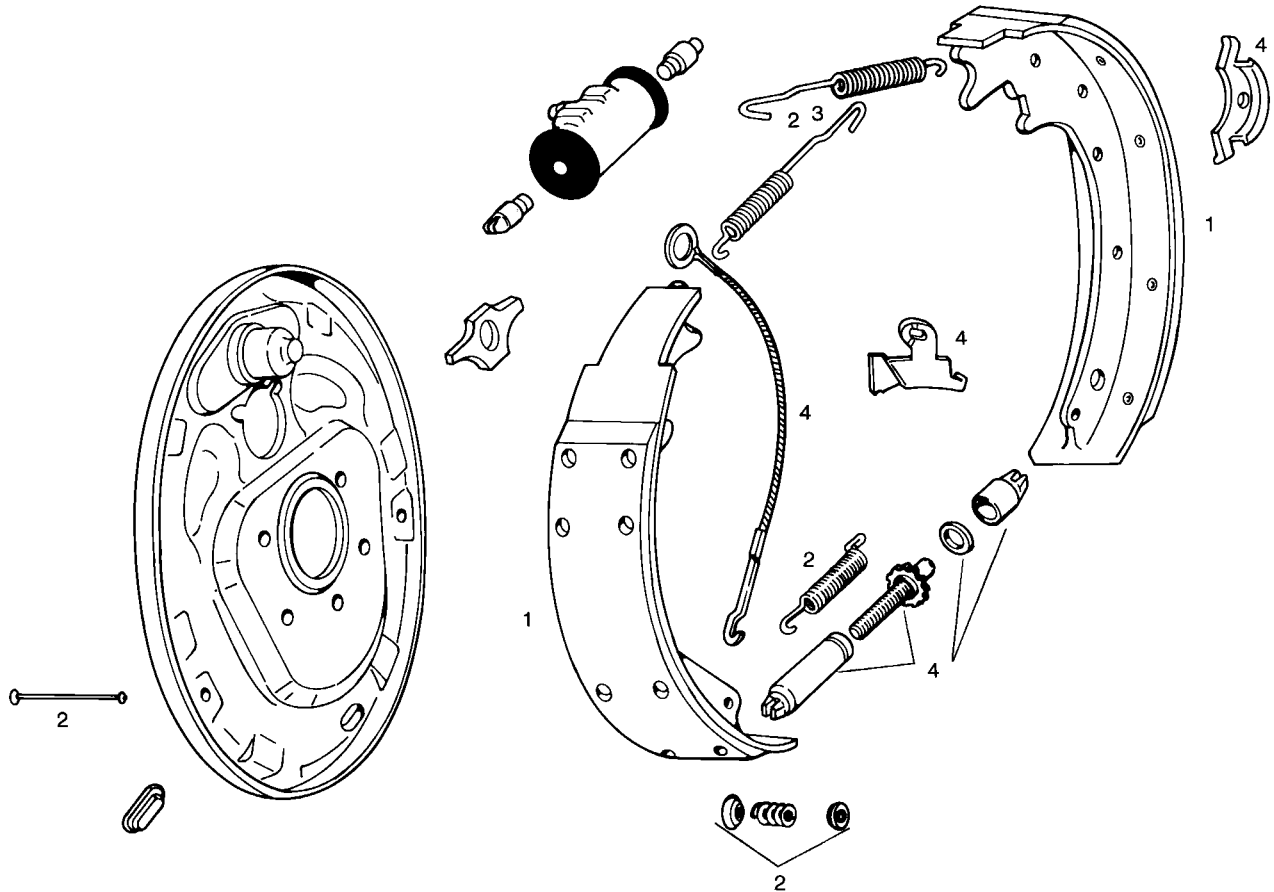


ILLUSTRATION OF TYPICAL COMPONENTS

1 SHOE SET	SIZE	2 HARDWARE KIT	3 RETURN SPRG. KIT	4 ADJUSTER PKG.	5 ADJUSTER SCREW	6 STAR WHEEL
---- 33	14 x 2 1/2 12 1/8 x 2	---- H7139	---- H130	---- H2538(L) H2539(R) or H2546(L) H2547(R) (See Appl. Sect.)	In Adj. Pkg.	N/R

FOR OTHER SYSTEM COMPONENTS SEE APPLICATION SECTION.  
SHOE AND LINING NUMBERS ARE FMSI ASSIGNMENTS.  
FOR SHOE SET AVAILABILITY SEE APPLICATION SECTION AND/OR PRICE SHEET.  
---- NOT AVAILABLE.  
N/R NOT REQUIRED.

# BENDIX FRONT DRUM BRAKE

DODGE INTERNATIONAL FORD

**MANUAL  
ADJUSTMENT**

FMSI NO.

224-63  
2043-36

SIZE

14 x 2 1/4  
13 x 2 1/4

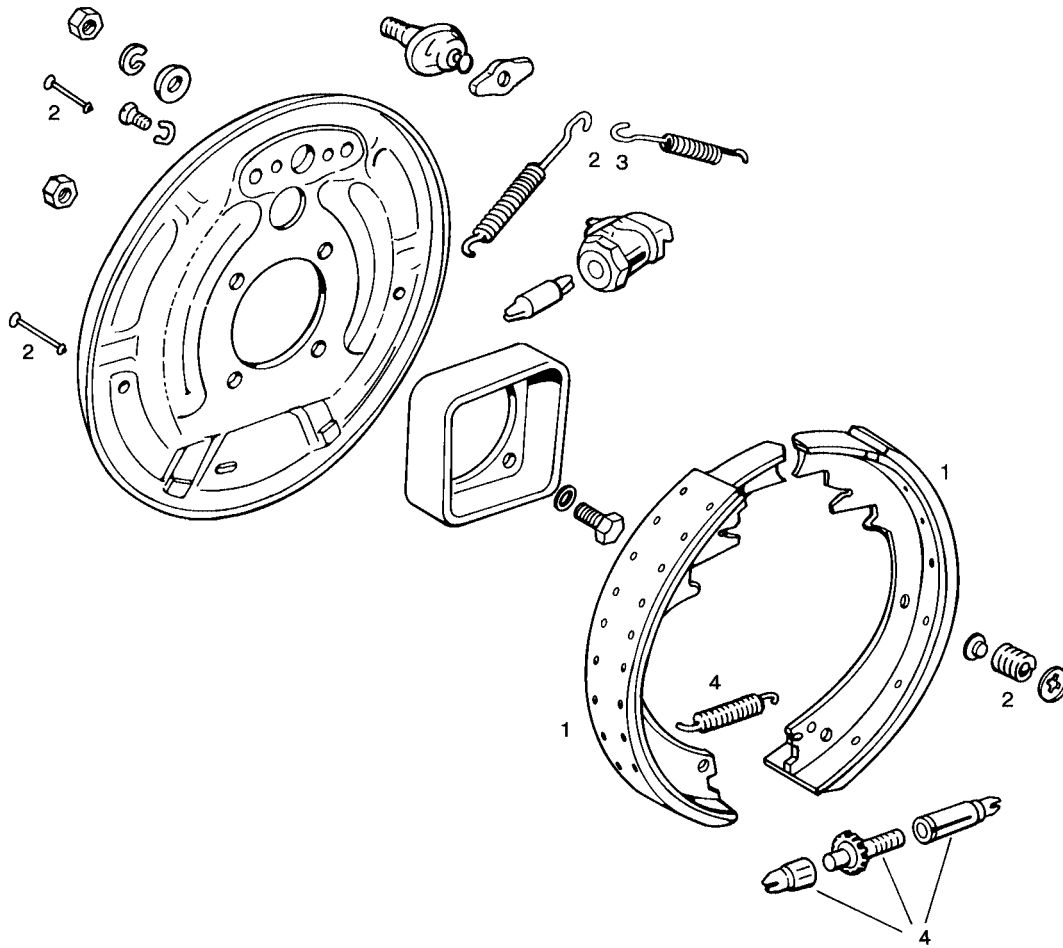


ILLUSTRATION OF TYPICAL COMPONENTS

1 SHOE SET	SIZE	2 HARDWARE KIT	3 RETURN SPRG. KIT	4 ADJUSTER PKG.	5 ADJUSTER SCREW	6 STAR WHEEL
----	14 x 2 1/4	----	----	H3514(R & L)	In Adj. Pkg.	N/R
R36	13 x 2 1/4	----	H130	H3514(R & L)	In Adj. Pkg.	N/R

FOR OTHER SYSTEM COMPONENTS SEE APPLICATION SECTION.

SHOE AND LINING NUMBERS ARE FMSI ASSIGNMENTS.

FOR SHOE SET AVAILABILITY SEE APPLICATION SECTION AND/OR PRICE SHEET.

---- NOT AVAILABLE.

N/R NOT REQUIRED.

# GENERAL MOTORS FRONT DRUM BRAKE

GMC-CHEV

**AUTOMATIC  
ADJUSTMENT**

FMSI NO.  
**2073-248**

SIZE  
**11.15 x 2.75**

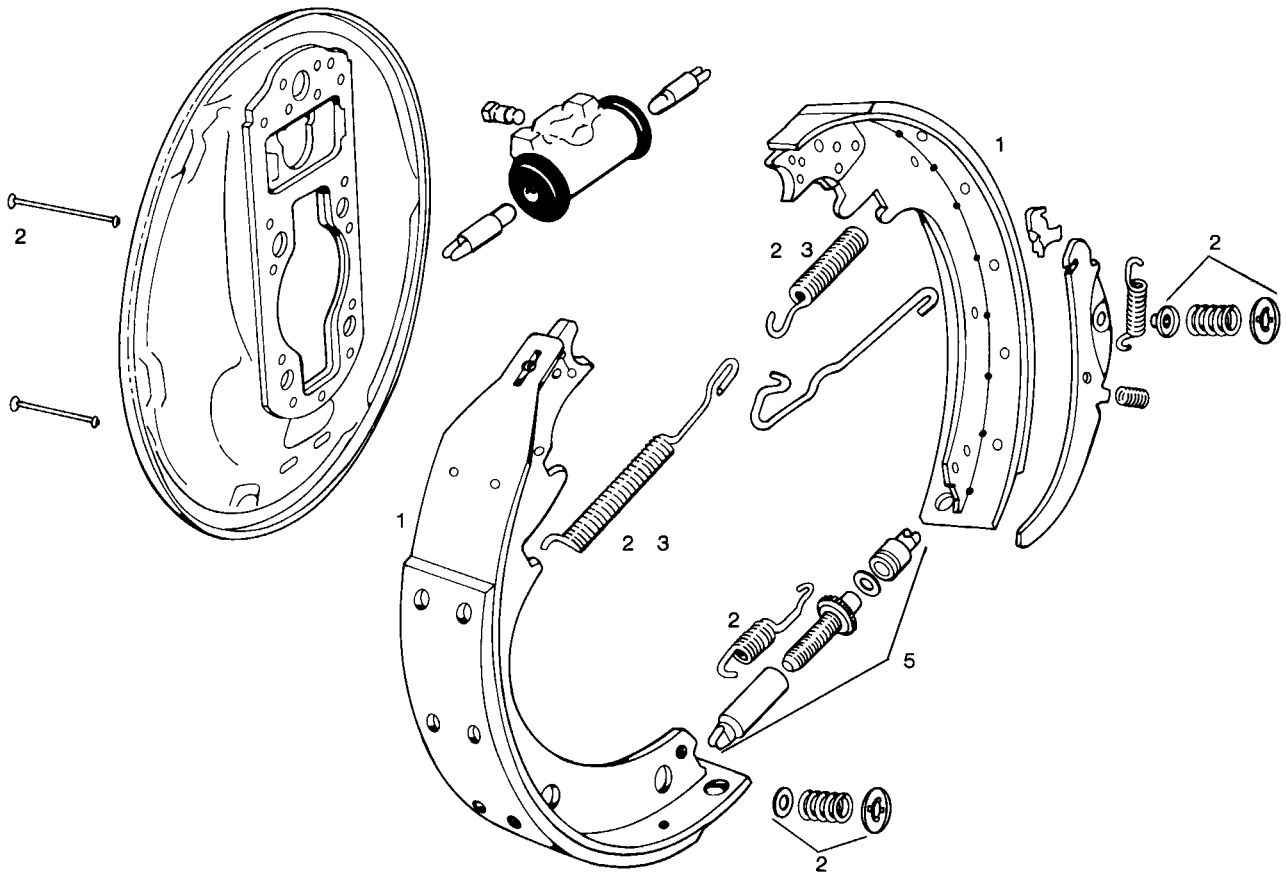


ILLUSTRATION OF TYPICAL COMPONENTS

1 SHOE SET	SIZE	2 HARDWARE KIT	3 RETURN SPRG. KIT	4 ADJUSTER PKG.	5 ADJUSTER SCREW	6 STAR WHEEL
----	11.15 x 2.75	H7017	H369	----	H1530(L) H1531(R)	N/R

FOR OTHER SYSTEM COMPONENTS SEE APPLICATION SECTION.  
SHOE AND LINING NUMBERS ARE FMSI ASSIGNMENTS.  
FOR SHOE SET AVAILABILITY SEE APPLICATION SECTION AND/OR PRICE SHEET.  
---- NOT AVAILABLE.  
N/R NOT REQUIRED.

# GENERAL MOTORS FRONT DRUM BRAKE

GMC-CHEV

**MANUAL  
ADJUSTMENT**

**FMSI NO.  
2039-109**

**SIZE  
14 x 2 1/2**

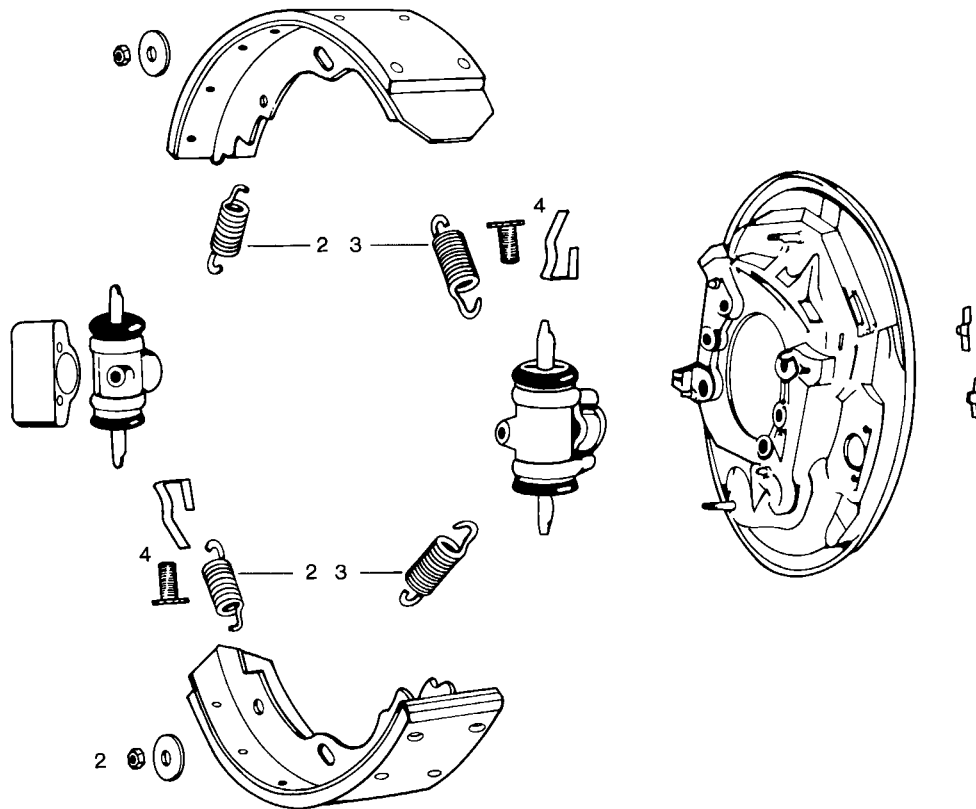


ILLUSTRATION OF TYPICAL COMPONENTS

1 SHOE SET	SIZE	2 HARDWARE KIT	3 RETURN SPRG. KIT	4 ADJUSTER PKG.	5 ADJUSTER SCREW	6 STAR WHEEL
----	14 x 2 1/2	----	----	----	In Adj. Pkg.	N/R

FOR OTHER SYSTEM COMPONENTS SEE APPLICATION SECTION.  
 SHOE AND LINING NUMBERS ARE FMSI ASSIGNMENTS.  
 FOR SHOE SET AVAILABILITY SEE APPLICATION SECTION AND/OR PRICE SHEET.  
 ---- NOT AVAILABLE.  
 N/R NOT REQUIRED.

# GENERAL MOTORS FRONT DRUM BRAKE

GMC-CHEV

**AUTOMATIC  
ADJUSTMENT**

**FMSI NO.  
2039-299**

**SIZE  
14 x 2 1/2**

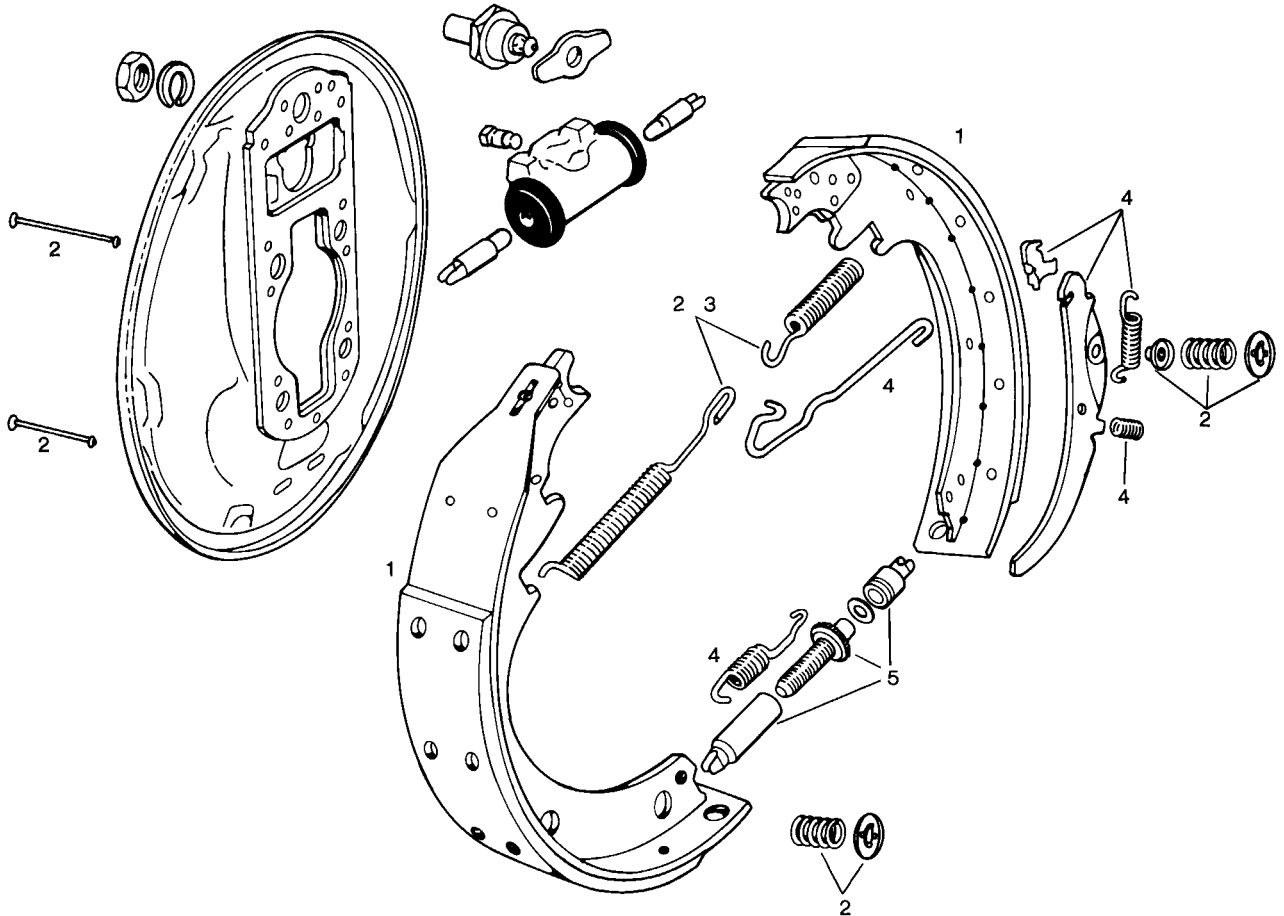


ILLUSTRATION OF TYPICAL COMPONENTS

1 SHOE SET	SIZE	2 HARDWARE KIT	3 RETURN SPRG. KIT	4 ADJUSTER PKG.	5 ADJUSTER SCREW	6 STAR WHEEL
299	14 x 2 1/2	H9206	H599	H3500(L) H3501(R) or H3528(L) ----(R) (See Appl. Sect.)	H1548(L) H1549(R)	N/R

FOR OTHER SYSTEM COMPONENTS SEE APPLICATION SECTION.  
SHOE AND LINING NUMBERS ARE FMSI ASSIGNMENTS.  
FOR SHOE SET AVAILABILITY SEE APPLICATION SECTION AND/OR PRICE SHEET.  
---- NOT AVAILABLE.  
N/R NOT REQUIRED.

# GENERAL MOTORS FRONT DRUM BRAKE

GMC-CHEV

**AUTOMATIC  
ADJUSTMENT**

**FMSI NO.**  
**4639-442**

**SIZE**  
**15 x 5**

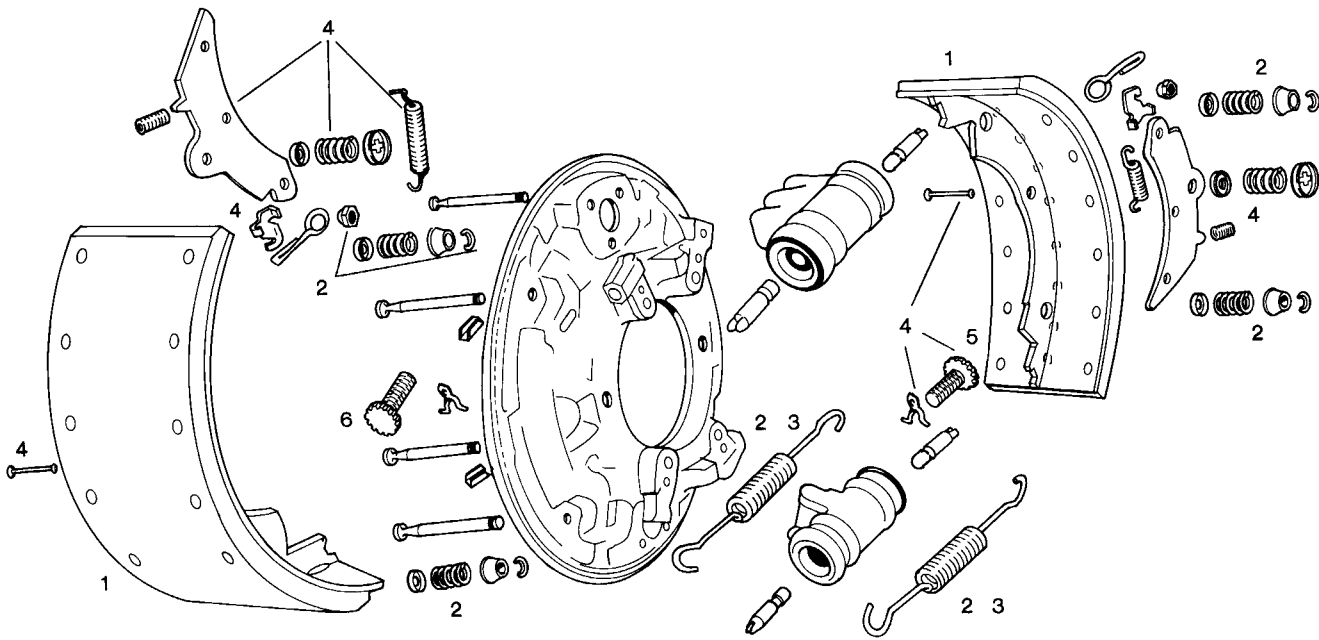


ILLUSTRATION OF TYPICAL COMPONENTS

1 SHOE SET	SIZE	2 HARDWARE KIT	3 RETURN SPRG. KIT	4 ADJUSTER PKG.	5 ADJUSTER SCREW	6 STAR WHEEL
442	15 x 5	H9236 If New Hold Down Pins Are Required Use H1201	H550	H3510(L) H3511(R)	H1842(L) H1843(R)	N/R N/R

FOR OTHER SYSTEM COMPONENTS SEE APPLICATION SECTION.  
SHOE AND LINING NUMBERS ARE FMSI ASSIGNMENTS.  
FOR SHOE SET AVAILABILITY SEE APPLICATION SECTION AND/OR PRICE SHEET.  
---- NOT AVAILABLE.  
N/R NOT REQUIRED.



# ISUZU (GMC) FRONT & REAR DRUM BRAKE

GMC-CHEV

ISUZU

**MANUAL  
ADJUSTMENT**

**FMSI NO.**

1417-S612

1416-S612

**SIZE**

325 x 76.5mm  
(12.79 x 3.015")

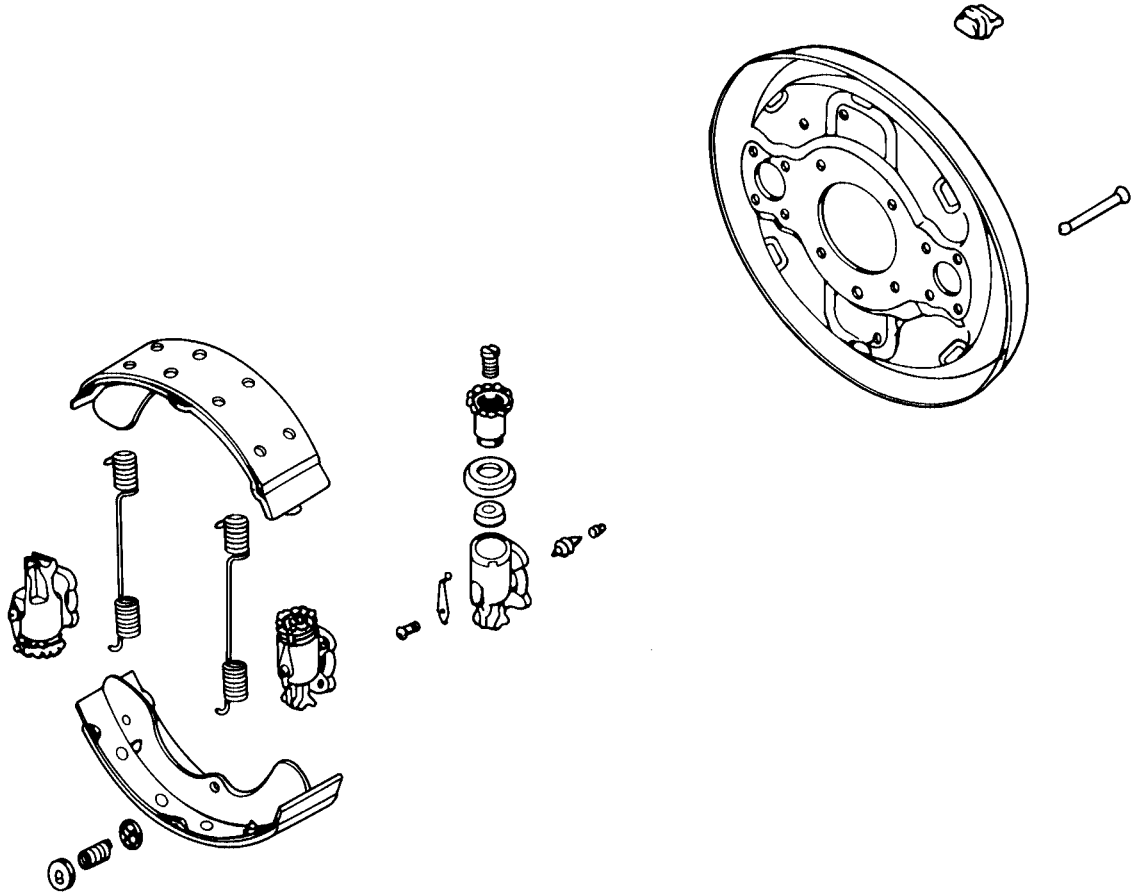


ILLUSTRATION OF TYPICAL COMPONENTS

1 SHOE SET	SIZE	2 HARDWARE KIT	3 RETURN SPRG. KIT	4 ADJUSTER PKG.	5 ADJUSTER SCREW	6 STAR WHEEL
----	325 x 76.5mm	H9238	----	----	N/R	N/R

FOR OTHER SYSTEM COMPONENTS SEE APPLICATION SECTION.

SHOE AND LINING NUMBERS ARE FMSI ASSIGNMENTS.

FOR SHOE SET AVAILABILITY SEE APPLICATION SECTION AND/OR PRICE SHEET.

---- NOT AVAILABLE.

N/R NOT REQUIRED.

# KELSEY-HAYES FRONT DRUM BRAKE

FORD

**MANUAL  
ADJUSTMENT**

**FMSI NO.**

**2060-72**

**SIZE**

**14 x 2 1/2**

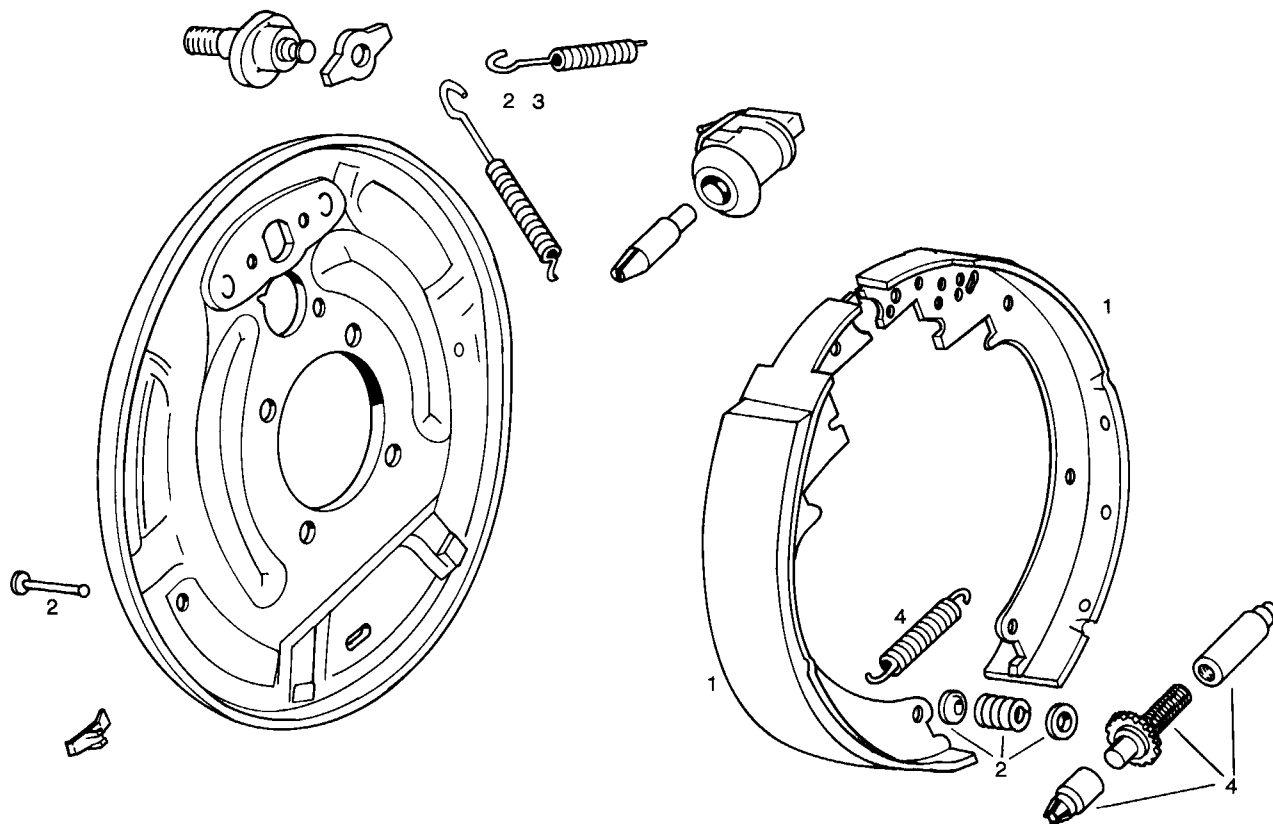


ILLUSTRATION OF TYPICAL COMPONENTS

1 SHOE SET	SIZE	2 HARDWARE KIT	3 RETURN SPRG. KIT	4 ADJUSTER PKG.	5 ADJUSTER SCREW	6 STAR WHEEL
R72	14 x 2 1/2	----	----	H3514(R & L)	In Adj. Pkg.	N/R

FOR OTHER SYSTEM COMPONENTS SEE APPLICATION SECTION.

SHOE AND LINING NUMBERS ARE FMSI ASSIGNMENTS.

FOR SHOE SET AVAILABILITY SEE APPLICATION SECTION AND/OR PRICE SHEET.

---- NOT AVAILABLE.

N/R NOT REQUIRED.

# KELSEY-HAYES FRONT DRUM BRAKE

FORD

**AUTOMATIC  
ADJUSTMENT**

FMSI NO.

2060-361

SIZE

14 x 2 1/2

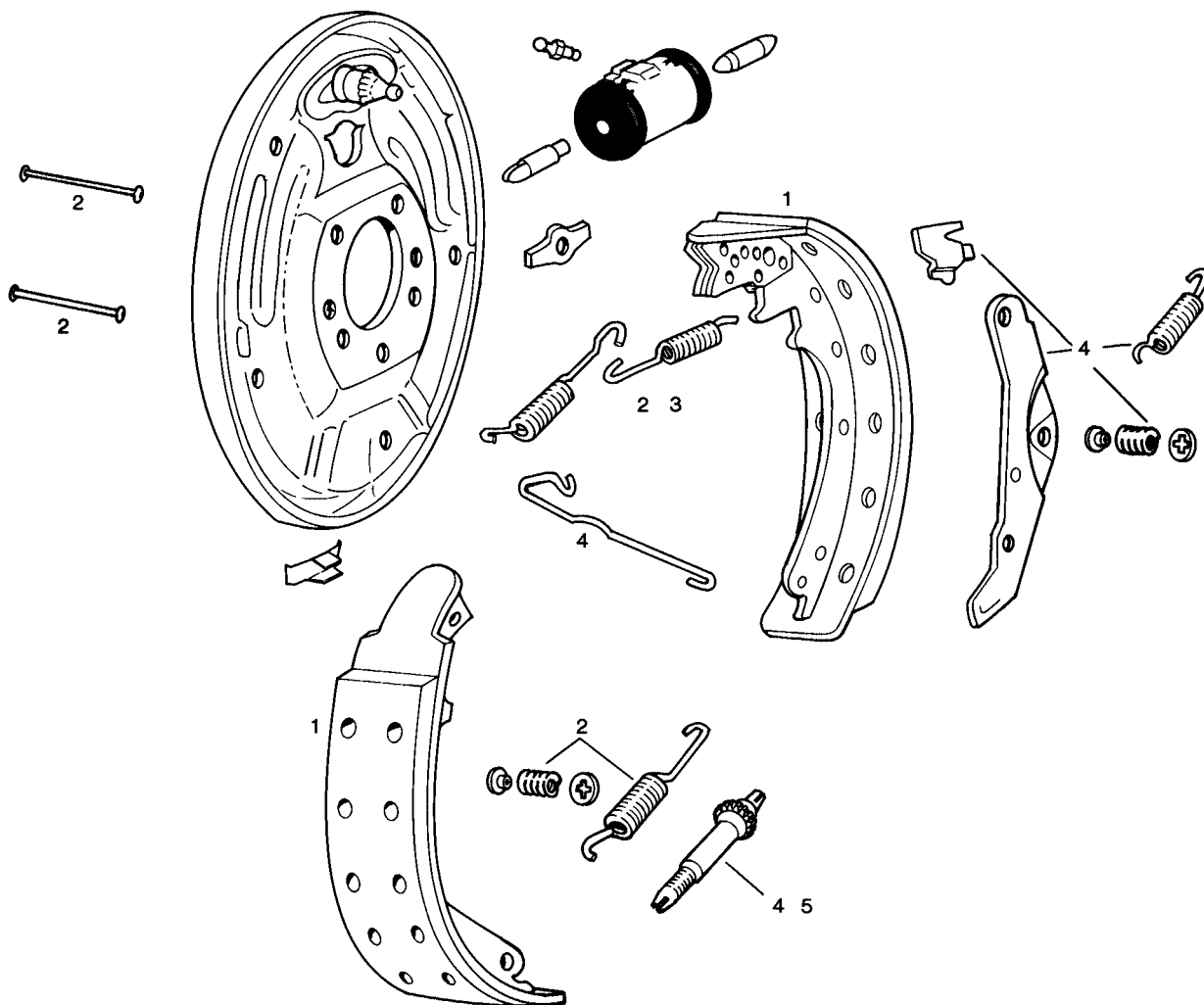


ILLUSTRATION OF TYPICAL COMPONENTS

1 SHOE SET	SIZE	2 HARDWARE KIT	3 RETURN SPRG. KIT	4 ADJUSTER PKG.	5 ADJUSTER SCREW	6 STAR WHEEL
361	14 x 2 1/2	H9219	----	H3536(L) H3537(R)	----	N/R

FOR OTHER SYSTEM COMPONENTS SEE APPLICATION SECTION.

SHOE AND LINING NUMBERS ARE FMSI ASSIGNMENTS.

FOR SHOE SET AVAILABILITY SEE APPLICATION SECTION AND/OR PRICE SHEET.

--- NOT AVAILABLE.

N/R NOT REQUIRED.

# ROCKWELL FRONT DRUM BRAKE

DODGE

INTERNATIONAL

**MANUAL  
ADJUSTMENT**

**FMSI NO.**

1258-91  
1127-90

**SIZE**

16 x 2<sup>1</sup>/<sub>4</sub>  
16 x 2<sup>1</sup>/<sub>2</sub>

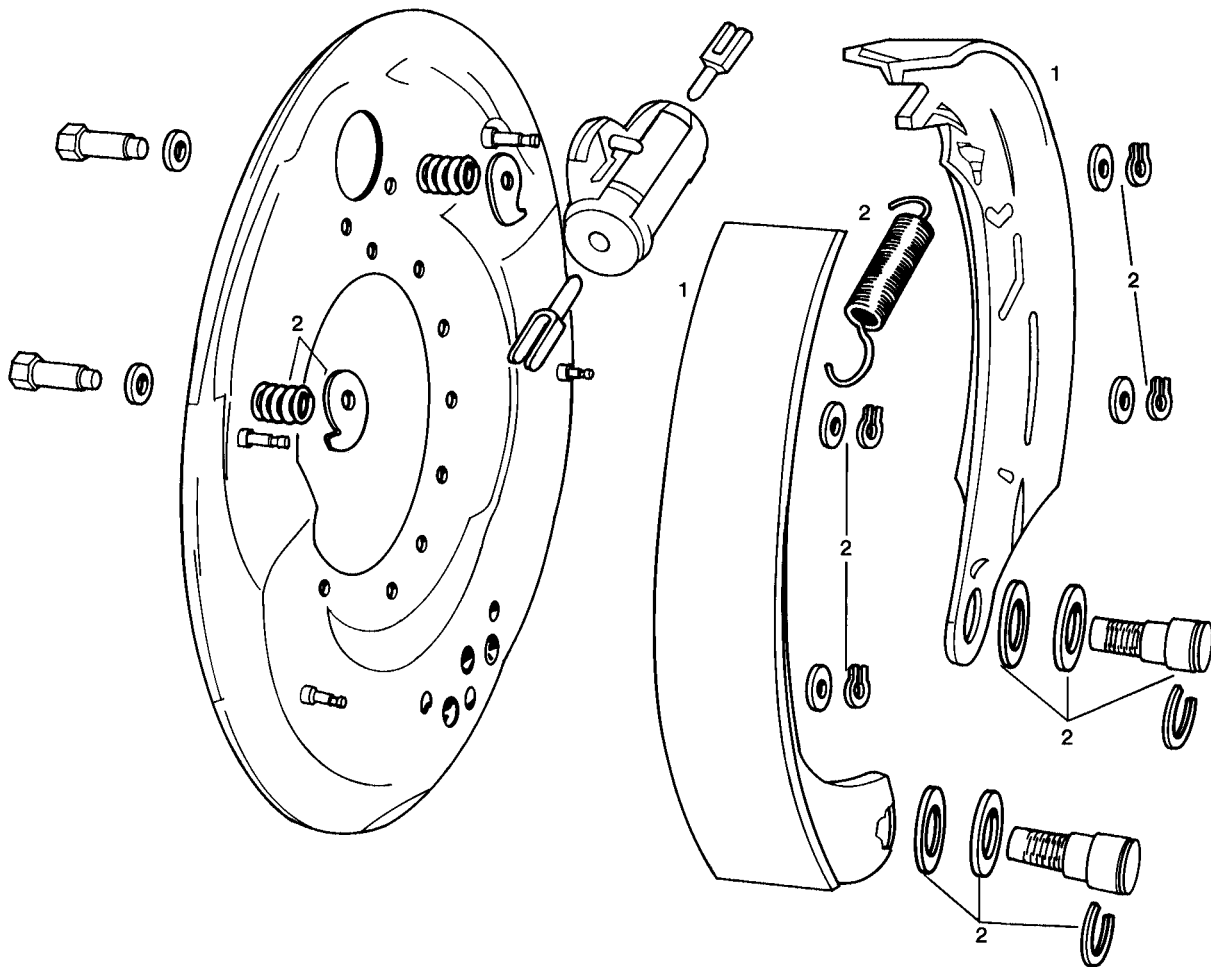


ILLUSTRATION OF TYPICAL COMPONENTS

1 SHOE SET	SIZE	2 HARDWARE KIT	3 RETURN SPRG. KIT	4 ADJUSTER PKG.	5 ADJUSTER SCREW	6 STAR WHEEL
----	16 x 2 <sup>1</sup> / <sub>4</sub>	----	----	----	----	N/R
90	16 x 2 <sup>1</sup> / <sub>2</sub>	----	----	----	----	N/R

FOR OTHER SYSTEM COMPONENTS SEE APPLICATION SECTION.  
SHOE AND LINING NUMBERS ARE FMSI ASSIGNMENTS.  
FOR SHOE SET AVAILABILITY SEE APPLICATION SECTION AND/OR PRICE SHEET.  
---- NOT AVAILABLE.  
N/R NOT REQUIRED.

# WAGNER FRONT DRUM BRAKE

## INTERNATIONAL

**MANUAL  
ADJUSTMENT**

**FMSI NO.**

**1233-119  
1234-252**

**SIZE**

**12<sup>1</sup>/<sub>8</sub> x 2<sup>1</sup>/<sub>4</sub>  
15 x 2<sup>1</sup>/<sub>4</sub>**

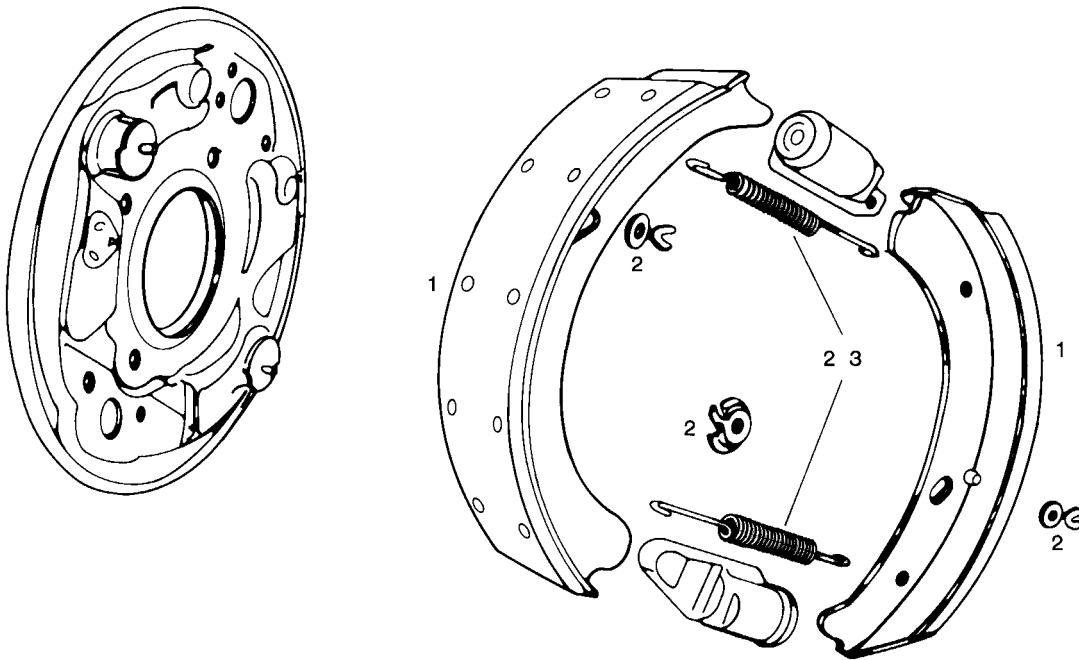


ILLUSTRATION OF TYPICAL COMPONENTS

1 SHOE SET	SIZE	2 HARDWARE KIT	3 RETURN SPRG. KIT	4 ADJUSTER PKG.	5 ADJUSTER SCREW	6 STAR WHEEL
----	12 <sup>1</sup> / <sub>8</sub> x 2 <sup>1</sup> / <sub>4</sub>	----	----	----	N/R	N/R
----	15 x 2 <sup>1</sup> / <sub>4</sub>	H9201	H521	----	N/R	N/R

FOR OTHER SYSTEM COMPONENTS SEE APPLICATION SECTION.  
 SHOE AND LINING NUMBERS ARE FMSI ASSIGNMENTS.  
 FOR SHOE SET AVAILABILITY SEE APPLICATION SECTION AND/OR PRICE SHEET.  
 ---- NOT AVAILABLE.  
 N/R NOT REQUIRED.

# WAGNER FRONT DRUM BRAKE

FORD GMC-CHEV INTERNATIONAL

**AUTOMATIC  
ADJUSTMENT**

**FMSI NO.**

**SIZE**

1294-325  
1294-367  
1245-321  
1280-322  
1345A-491

14 x 2 1/2  
14 x 2 1/2  
15 x 3  
15 x 3 1/2  
15 x 5

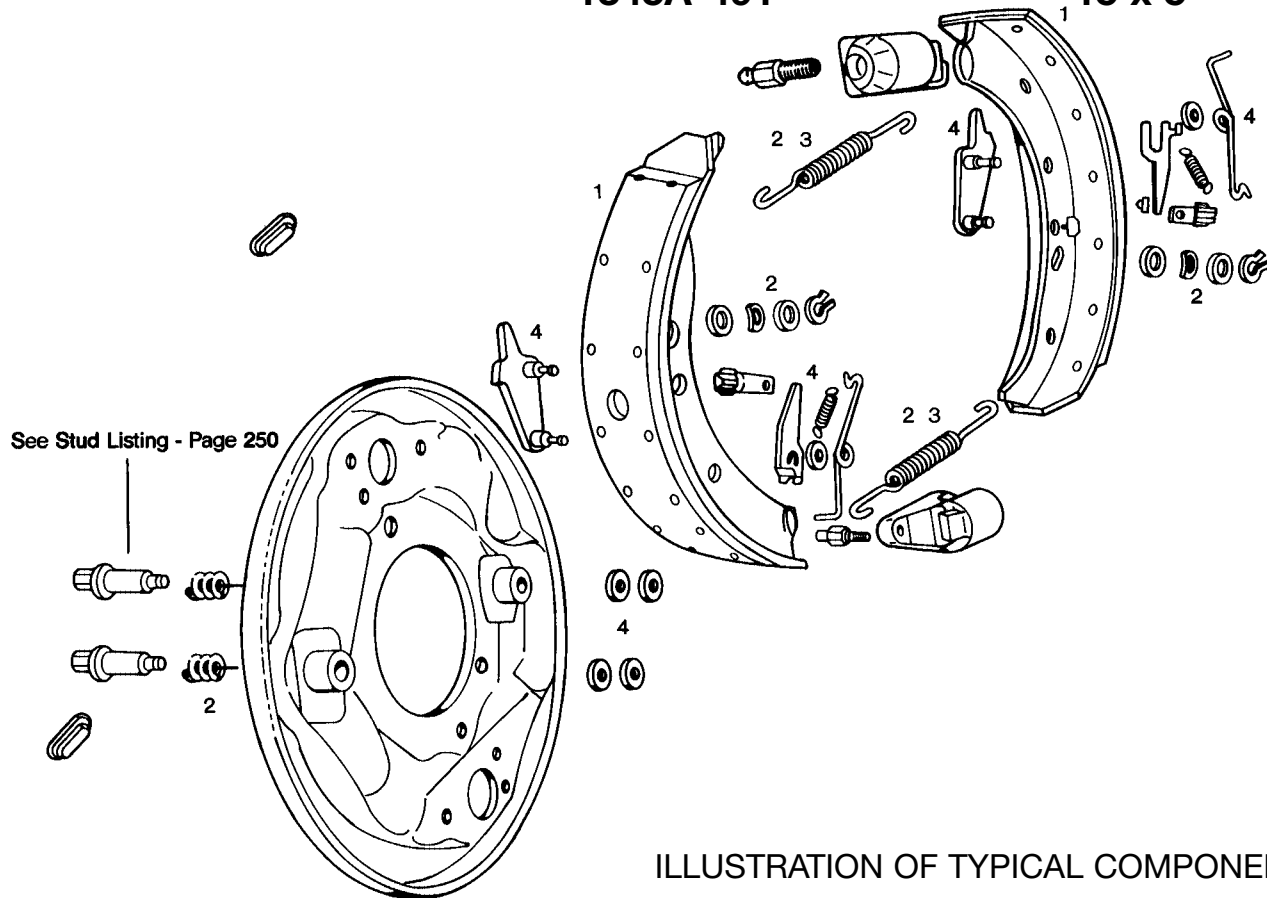


ILLUSTRATION OF TYPICAL COMPONENTS

1 SHOE SET	SIZE	2 HARDWARE KIT	3 RETURN SPRG. KIT	4 ADJUSTER PKG.	5 ADJUSTER SCREW	6 STAR WHEEL
R325	14 x 2 1/2	H9237	H521	H3502(L) H3503(R)	N/R	N/R
----	14 x 2 1/2	H9237	H521	H3502(L) H3503(R)	N/R	N/R
321	15 x 3	H9237	H521	H3502(L) H3503(R)	N/R	N/R
322	15 x 3 1/2	H9237	H521	H3502(L) H3503(R)	N/R	N/R
R491	15 x 5	H9202	H533	H3502(L) H3503(R)	N/R	N/R

FOR OTHER SYSTEM COMPONENTS SEE APPLICATION SECTION.  
SHOE AND LINING NUMBERS ARE FMSI ASSIGNMENTS.  
FOR SHOE SET AVAILABILITY SEE APPLICATION SECTION AND/OR PRICE SHEET.  
---- NOT AVAILABLE.  
N/R NOT REQUIRED.

# WAGNER FRONT DRUM BRAKE

FORD GMC-CHEV INTERNATIONAL

**MANUAL  
ADJUSTMENT**

**FMSI NO.**

**SIZE**

1294-325

14 x 2 1/2

1245-235

15 x 3

1280-463

15 x 3 1/2

1345-490

15 x 5

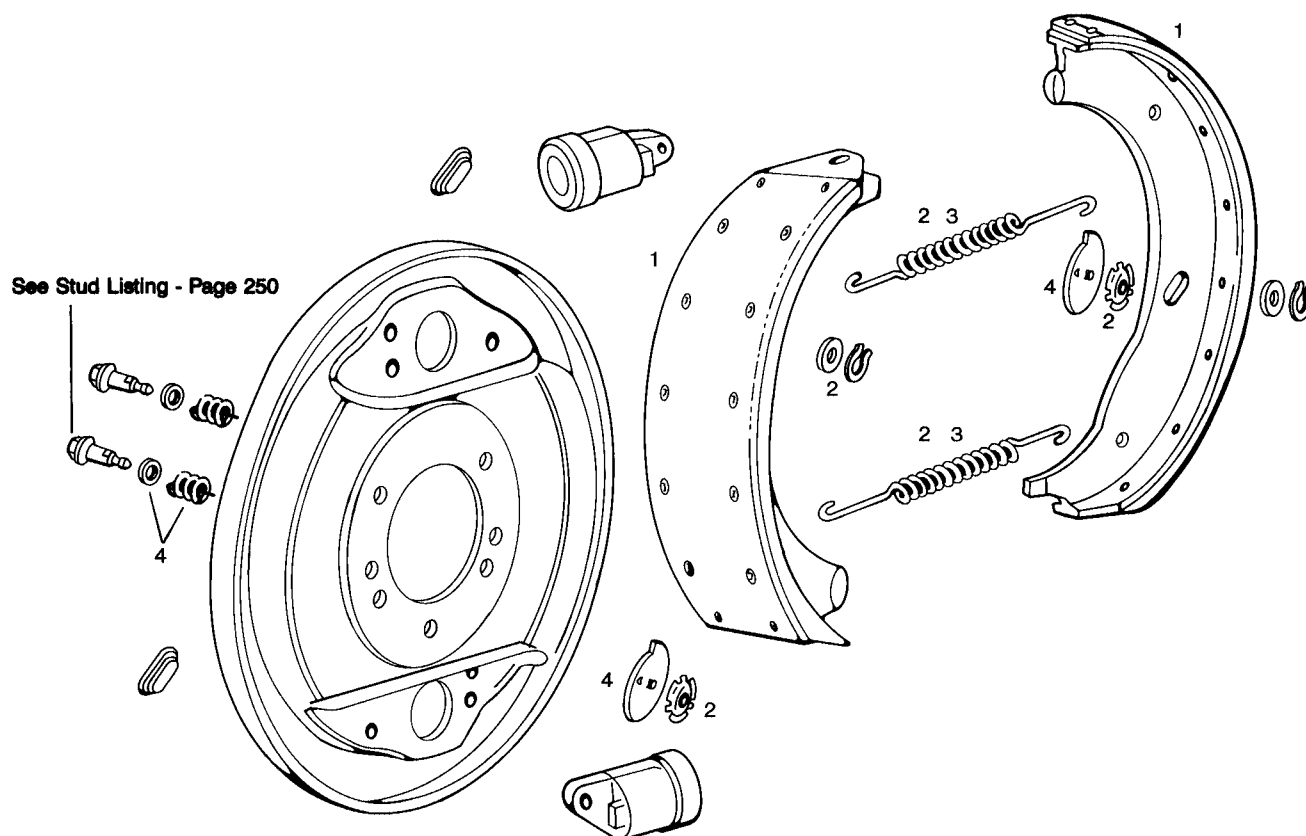


ILLUSTRATION OF TYPICAL COMPONENTS

1 SHOE SET	SIZE	2 HARDWARE KIT	3 RETURN SPRG. KIT	4 ADJUSTER PKG.	5 ADJUSTER SCREW	6 STAR WHEEL
R325	14 x 2 1/2	H9201	H521	H3524	N/R	N/R
R235	15 x 3	H9201	H521	H3524	N/R	N/R
463	15 x 3 1/2	H9201	H521	H3524	N/R	N/R
R490	15 x 5	H9211	H533	H3524	N/R	N/R

FOR OTHER SYSTEM COMPONENTS SEE APPLICATION SECTION.  
SHOE AND LINING NUMBERS ARE FMSI ASSIGNMENTS.  
FOR SHOE SET AVAILABILITY SEE APPLICATION SECTION AND/OR PRICE SHEET.  
N/R NOT REQUIRED.

# BENDIX REAR DRUM BRAKE

DODGE FORD INTERNATIONAL

**AUTOMATIC  
ADJUSTMENT**

FMSI NO.

2146-316  
2140-314

SIZE

12 x 2 1/2  
12 x 3

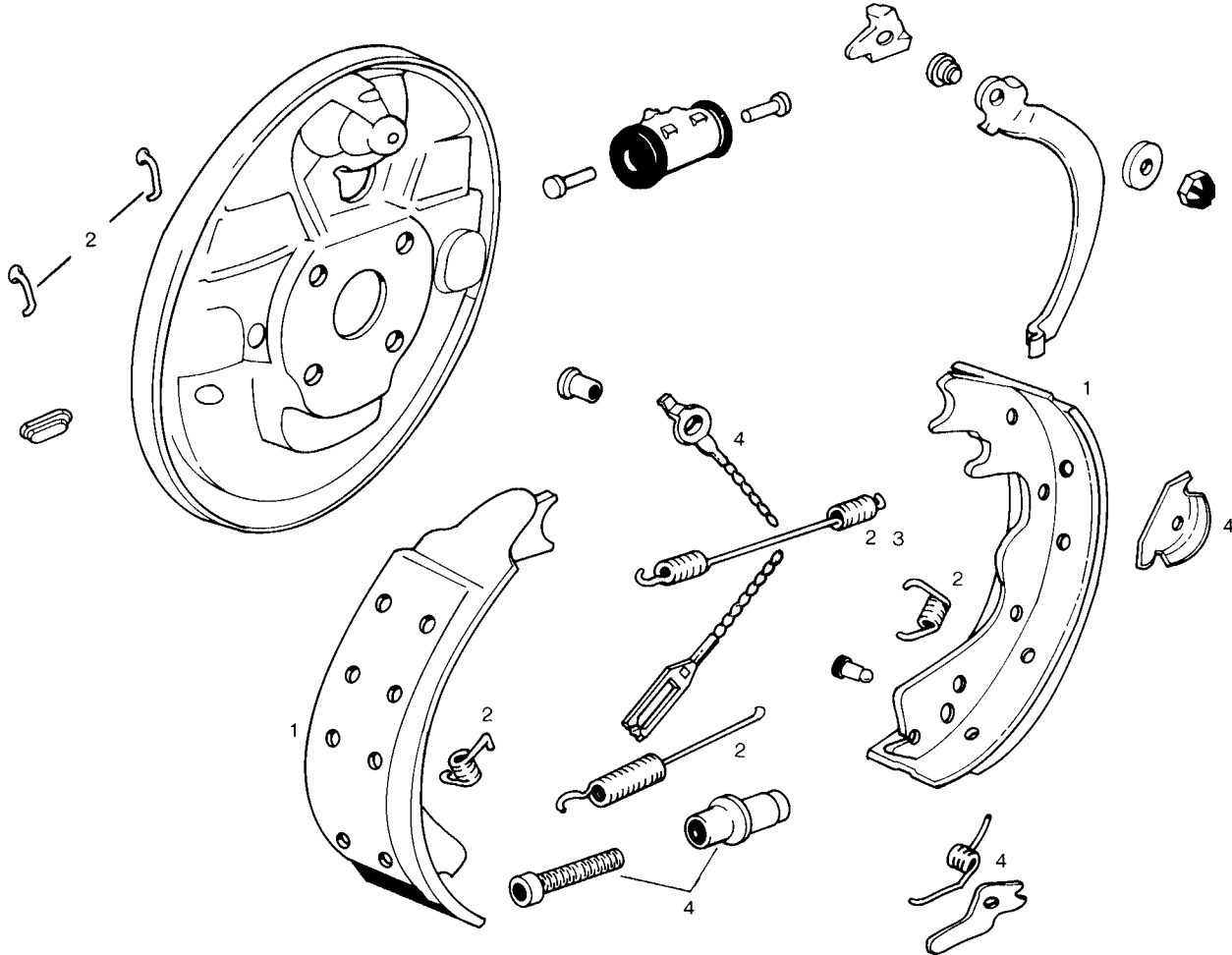


ILLUSTRATION OF TYPICAL COMPONENTS

1 SHOE SET	SIZE	2 HARDWARE KIT	3 RETURN SPRG. KIT	4 ADJUSTER PKG.	5 ADJUSTER SCREW	6 STAR WHEEL
----	12 x 2 1/2	H7181 or H7146	H608 or H546	H2598(L) H2599(R) H2598(L) H2599(R)	H1534(L) H1535(R) H1534(L) H1535(R)	N/R  N/R
----	12 x 3	H7181 or H7146 (See Appl. Sect.)	H608 or H546 (See Appl. Sect.)	H2598(L) H2599(R) H2598(L) H2599(R)	H1534(L) H1535(R) H1534(L) H1535(R)	N/R  N/R

FOR OTHER SYSTEM COMPONENTS SEE APPLICATION SECTION.  
SHOE AND LINING NUMBERS ARE FMSI ASSIGNMENTS.  
FOR SHOE SET AVAILABILITY SEE APPLICATION SECTION AND/OR PRICE SHEET.  
---- NOT AVAILABLE.  
N/R NOT REQUIRED.



# BENDIX REAR DRUM BRAKE

DODGE FORD INTERNATIONAL

**AUTOMATIC  
ADJUSTMENT**

FMSI NO.

2146-357

2140-358

2162-475

SIZE

12 x 2<sup>1</sup>/<sub>2</sub>

12 x 3

13 x 2<sup>1</sup>/<sub>2</sub>

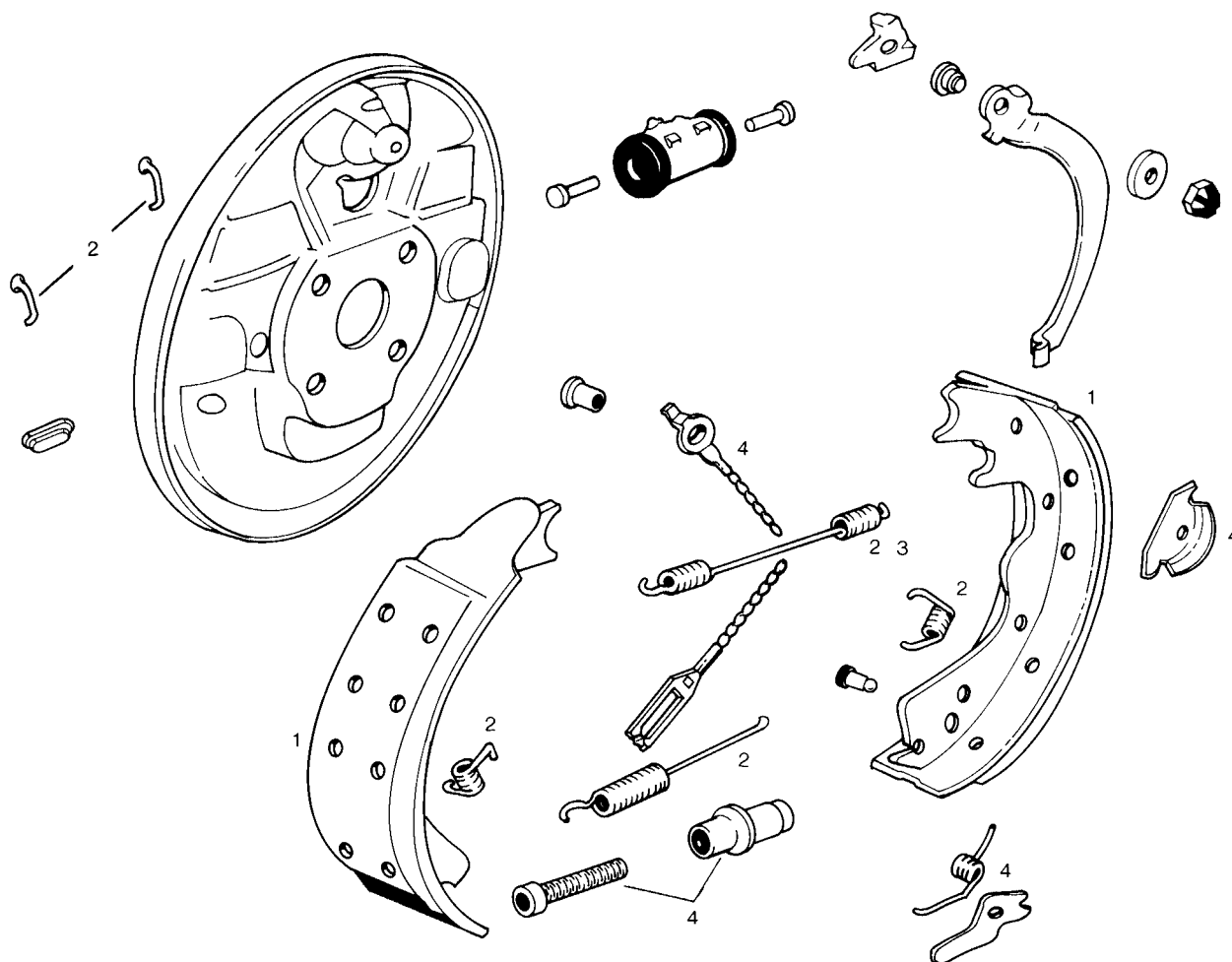


ILLUSTRATION OF TYPICAL COMPONENTS

1 SHOE SET	SIZE	2 HARDWARE KIT	3 RETURN SPRG. KIT	4 ADJUSTER PKG.	5 ADJUSTER SCREW	6 STAR WHEEL
357	12 x 2 <sup>1</sup> / <sub>2</sub>	H7199	H547	H2576(L) H2577(R)	H1540(L) H1541(R)	N/R
358	12 x 3	H7199	H547	H2576(L) H2577(R)	H1540(L) H1541(R)	N/R
----	13 x 2 <sup>1</sup> / <sub>2</sub>	H7199	H547	H2576(L) H2577(R)	H1540(L) H1541(R)	N/R

FOR OTHER SYSTEM COMPONENTS SEE APPLICATION SECTION.  
SHOE AND LINING NUMBERS ARE FMSI ASSIGNMENTS.  
FOR SHOE SET AVAILABILITY SEE APPLICATION SECTION AND/OR PRICE SHEET.  
---- NOT AVAILABLE.  
N/R NOT REQUIRED.

# BENDIX REAR DRUM BRAKE

DODGE

FORD

MANUAL  
ADJUSTMENT

FMSI NO.

SIZE

2041-22

14 1/8 x 3 1/2

2032-88

15 x 4

2032-41

15 x 4

4564-83

15 x 4 1/2

2032-108

15 x 4

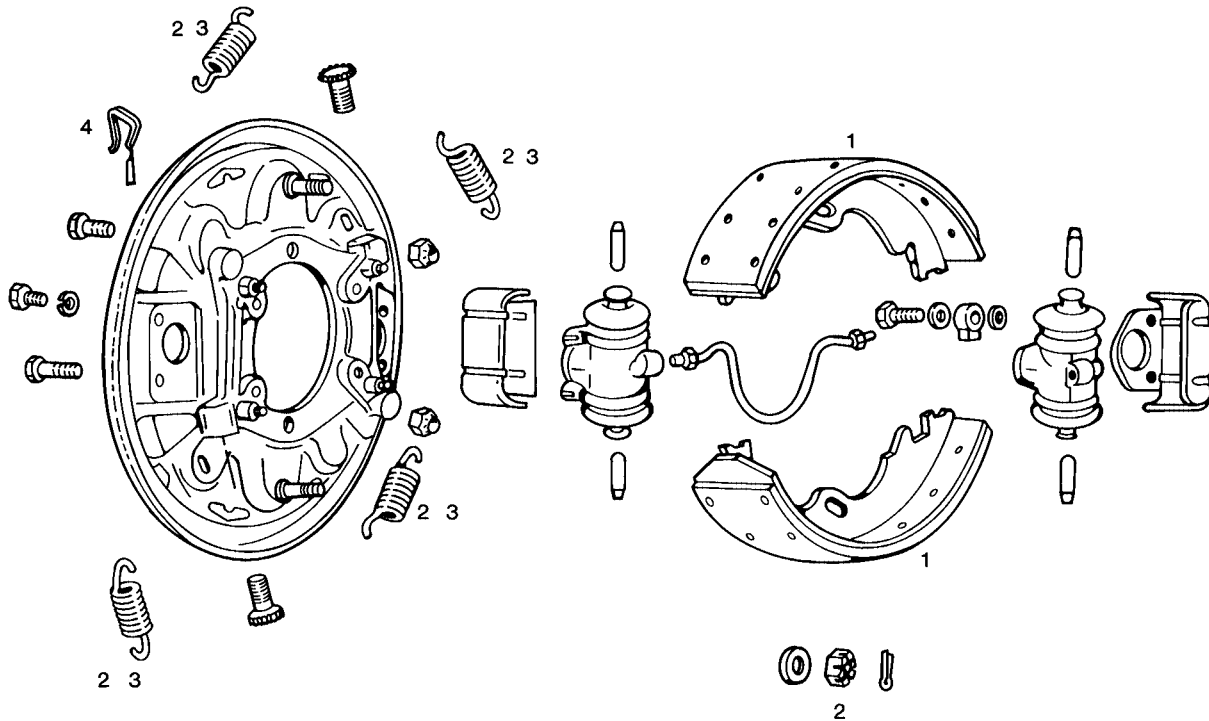


ILLUSTRATION OF TYPICAL COMPONENTS

1 SHOE SET	SIZE	2 HARDWARE KIT	3 RETURN SPRG. KIT	4 ADJUSTER PKG.	5 ADJUSTER SCREW	6 STAR WHEEL
----	14 1/8 x 3 1/2	----	----	----(L) H3535(R)	H1826(L) H1827(R)	N/R
R88	15 x 4	H9223	----	----(L) H3535(R)	H1826(L) H1827(R)	N/R
----	15 x 4	H9223	----	----(L) H3535(R)	H1826(L) H1827(R)	N/R
----	15 x 4 1/2	H9223	----	----	----	N/R
R108	15 x 4	----	----	----(L) ----(R)	H1800(L) H1801(R)	N/R

FOR OTHER SYSTEM COMPONENTS SEE APPLICATION SECTION.

SHOE AND LINING NUMBERS ARE FMSI ASSIGNMENTS.

FOR SHOE SET AVAILABILITY SEE APPLICATION SECTION AND/OR PRICE SHEET.

---- NOT AVAILABLE.

N/R NOT REQUIRED.

# BENDIX REAR DRUM BRAKE

DODGE

**AUTOMATIC  
ADJUSTMENT**

**FMSI NO.  
2032-402**

**SIZE  
15 x 4**

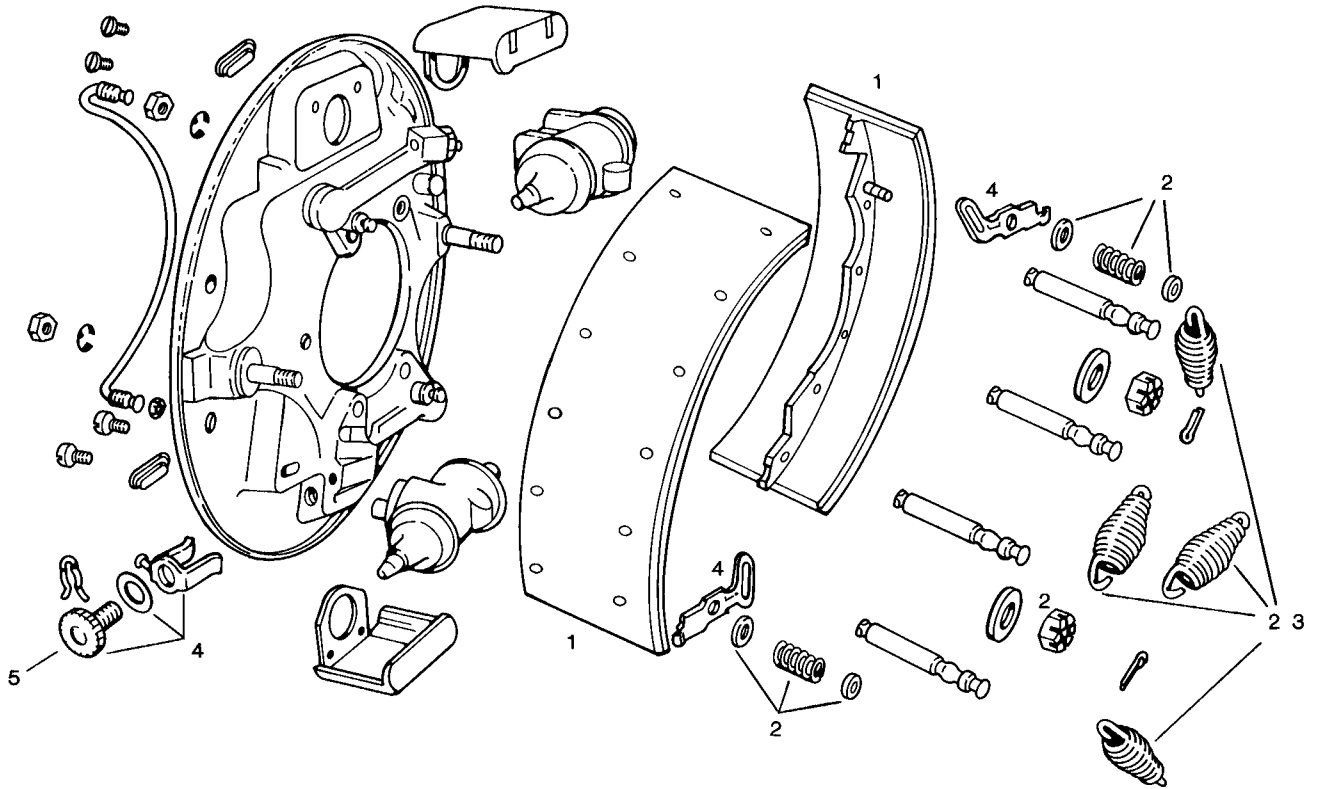


ILLUSTRATION OF TYPICAL COMPONENTS

1 SHOE SET	SIZE	2 HARDWARE KIT	3 RETURN SPRG. KIT	4 ADJUSTER PKG.	5 ADJUSTER SCREW	6 STAR WHEEL
R402	15 x 4	H9223	----	----	H1826(L) H1827(R)	N/R

FOR OTHER SYSTEM COMPONENTS SEE APPLICATION SECTION.  
SHOE AND LINING NUMBERS ARE FMSI ASSIGNMENTS.  
FOR SHOE SET AVAILABILITY SEE APPLICATION SECTION AND/OR PRICE SHEET.  
---- NOT AVAILABLE.  
N/R NOT REQUIRED.

# GENERAL MOTORS REAR DRUM BRAKE

## GMC-CHEV

**AUTOMATIC  
ADJUSTMENT**

**FMSI NO.**

**2042-417  
2042-451**

**SIZE**

**13 x 2 1/2  
13 x 2 1/2**

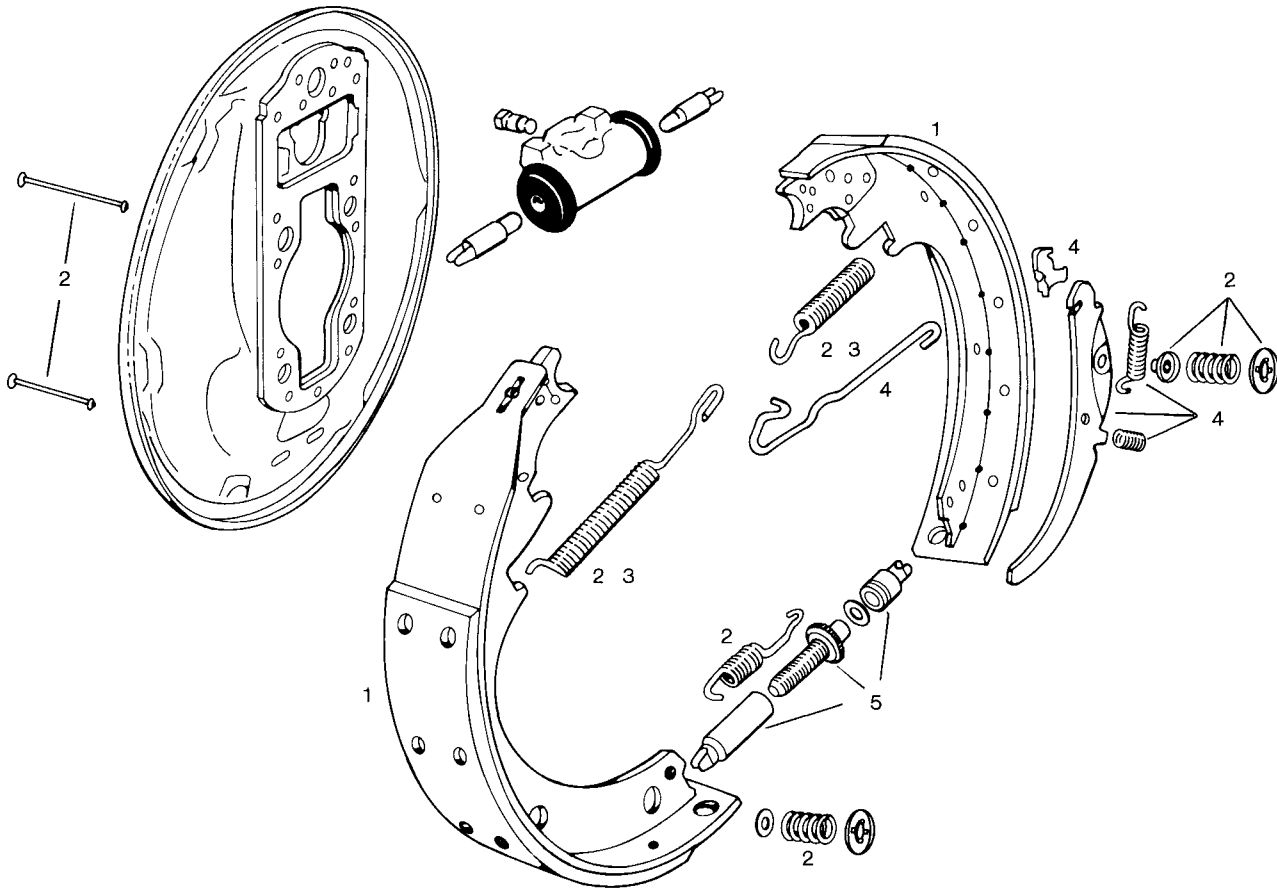


ILLUSTRATION OF TYPICAL COMPONENTS

1 SHOE SET	SIZE	2 HARDWARE KIT	3 RETURN SPRG. KIT	4 ADJUSTER PKG.	5 ADJUSTER SCREW	6 STAR WHEEL
417	13 x 2 1/2	H7027	H378	H2572(L) H2573(R)	H1550(L) H1551(R) or H1548(L) H1549(R) (See Appl. Sect.)	N/R  N/R
451	13 x 2 1/2	H7055	H378	H2588(L) H2589(R)	H1550(L) H1551(R)	N/R

FOR OTHER SYSTEM COMPONENTS SEE APPLICATION SECTION.  
SHOE AND LINING NUMBERS ARE FMSI ASSIGNMENTS.  
FOR SHOE SET AVAILABILITY SEE APPLICATION SECTION AND/OR PRICE SHEET.  
N/R NOT REQUIRED.

# GENERAL MOTORS REAR DRUM BRAKE

## GMC-CHEV

**AUTOMATIC  
ADJUSTMENT**

**FMSI NO.**  
2157-418  
2157-452

**SIZE**  
13 x 3 1/2  
13 x 3 1/2

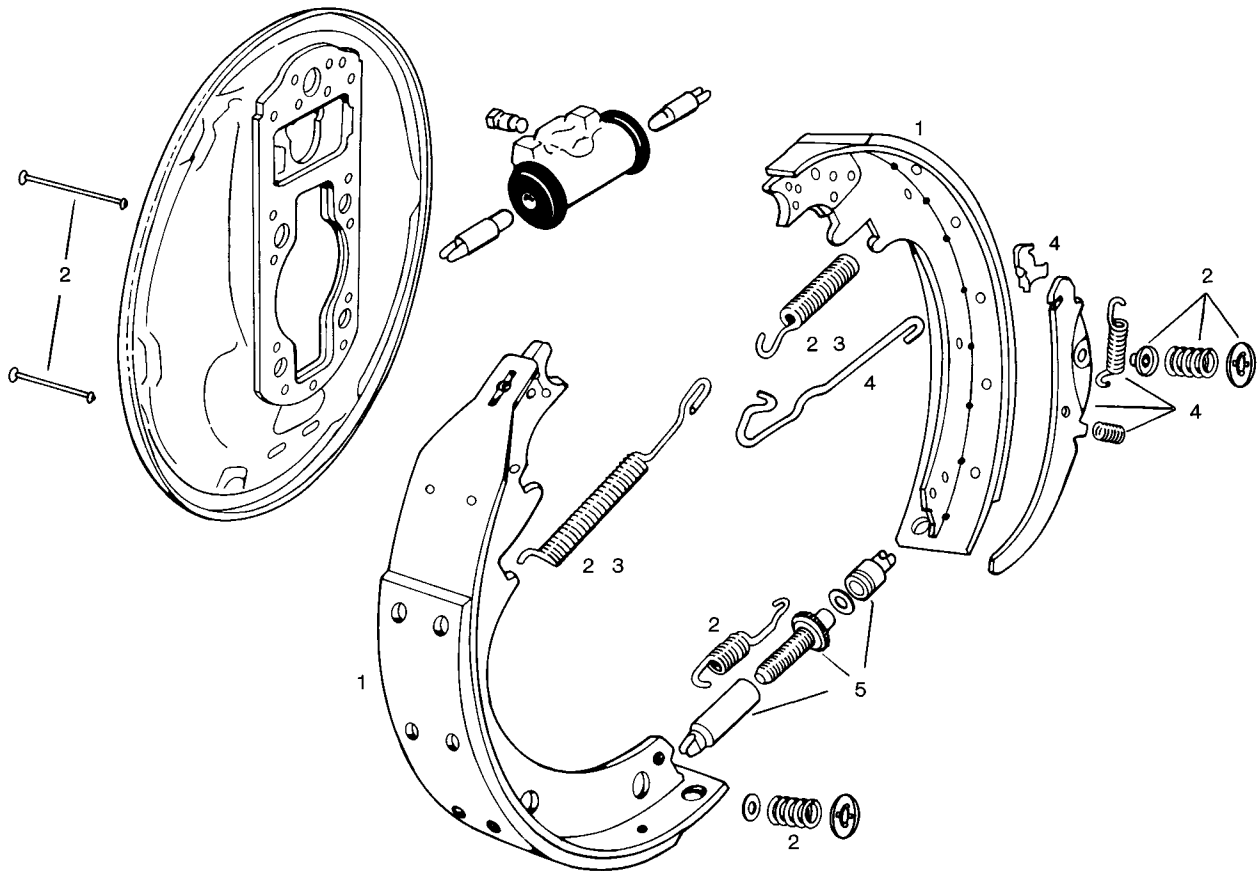


ILLUSTRATION OF TYPICAL COMPONENTS

1 SHOE SET	SIZE	2 HARDWARE KIT	3 RETURN SPRG. KIT	4 ADJUSTER PKG.	5 ADJUSTER SCREW	6 STAR WHEEL
418	13 x 3 1/2	H7027	H378	H2572(L) H2573(R)	H1550(L) H1551(R)	N/R
452	13 x 3 1/2	H7055	H378	H2588(L) H2589(R)	H1550(L) H1551(R)	N/R

FOR OTHER SYSTEM COMPONENTS SEE APPLICATION SECTION.  
SHOE AND LINING NUMBERS ARE FMSI ASSIGNMENTS.  
FOR SHOE SET AVAILABILITY SEE APPLICATION SECTION AND/OR PRICE SHEET.  
N/R NOT REQUIRED.

# GENERAL MOTORS REAR DRUM BRAKE

GMC-CHEV

**AUTOMATIC  
ADJUSTMENT**

**FMSI NO.**

**SIZE**

4640-285

15 x 4

4640-427

15 x 4

4639-368

15 x 5

4639-442

15 x 5

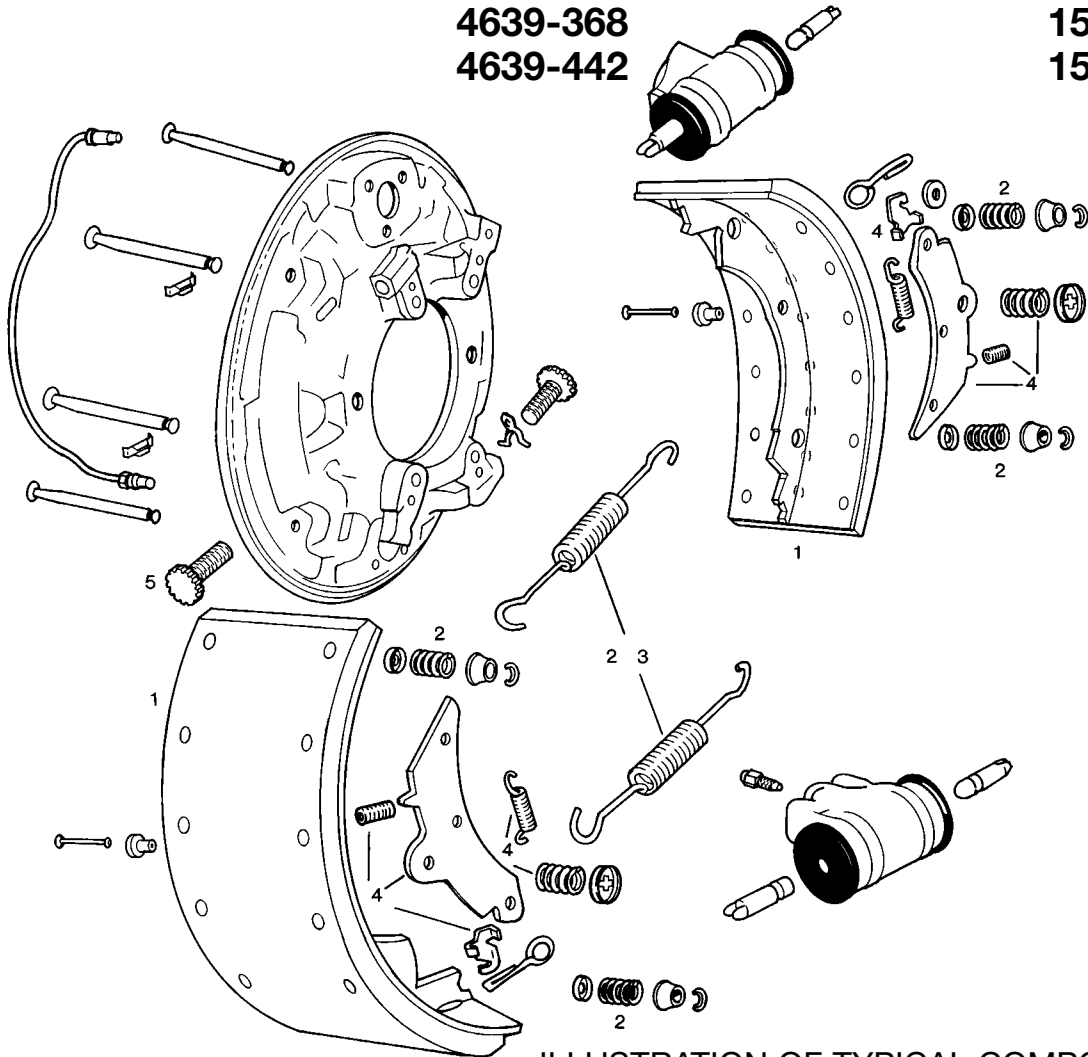


ILLUSTRATION OF TYPICAL COMPONENTS

1 SHOE SET	SIZE	2 HARDWARE KIT	3 RETURN SPRG. KIT	4 ADJUSTER PKG.	5 ADJUSTER SCREW	6 STAR WHEEL
----	15 x 4	----	----	H3552(L) -----(R)	H1824(L) H1825(R)	N/R
427	15 x 4	H9209 or H9236	H550	H3510(L) H3511(R)	H1842(L) H1843(R)	N/R
R368	15 x 5	----	----	----	H1824(L) H1825(R)	N/R
442	15 x 5	H9209 or H9236 If New Hold Down Pins Are Required Use H1201	H550	H3510(L) H3511(R)	H1842(L) H1843(R)	N/R

FOR OTHER SYSTEM COMPONENTS SEE APPLICATION SECTION.  
SHOE AND LINING NUMBERS ARE FMSI ASSIGNMENTS.  
FOR SHOE SET AVAILABILITY SEE APPLICATION SECTION AND/OR PRICE SHEET.  
---- NOT AVAILABLE.  
N/R NOT REQUIRED.

# KELSEY-HAYES REAR DRUM BRAKE

FORD

**AUTOMATIC  
ADJUSTMENT**

**FMSI NO.**

4646-400

4647-401

**SIZE**

15 x 5

15 x 4

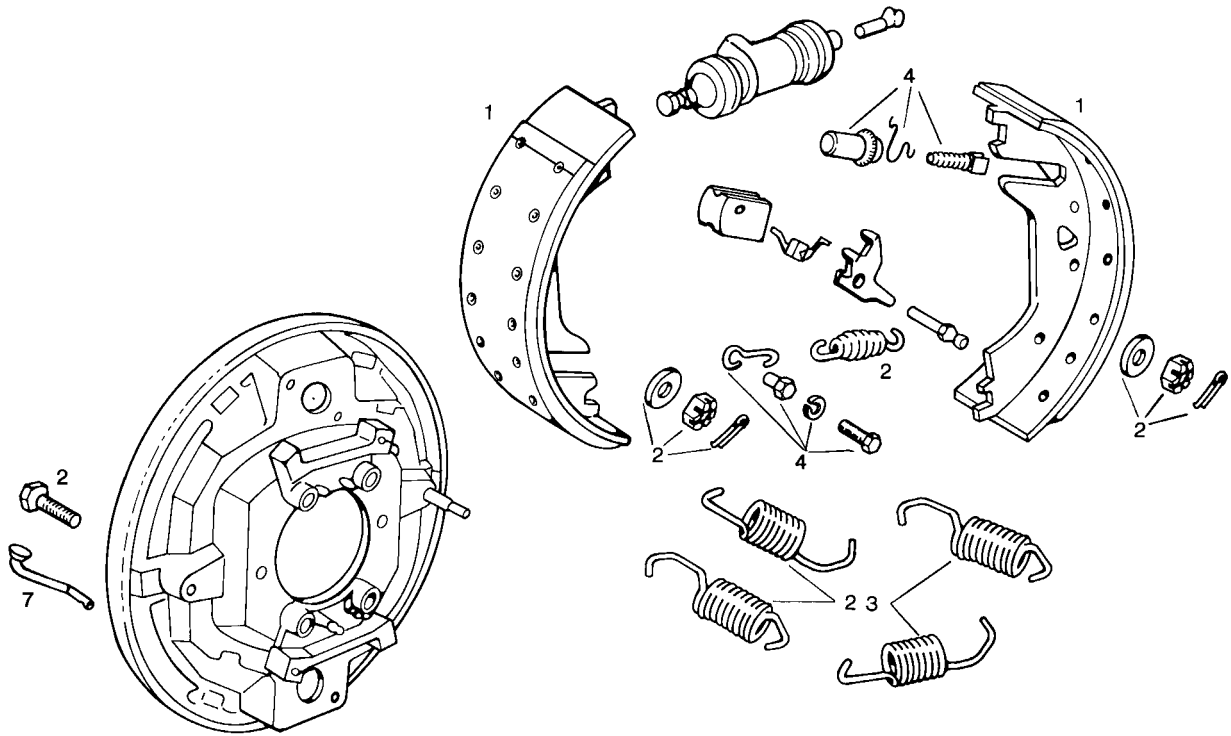


ILLUSTRATION OF TYPICAL COMPONENTS

1 SHOE SET	SIZE	2 HARDWARE KIT	3 RETURN SPRG. KIT	4 ADJUSTER PKG.	5 ADJUSTER SCREW	6 STAR WHEEL	7 RETURN SPRG. PIN
400	15 x 5	H9220	H595	H3538(L) H3539(R)	In Adj. Pkg.	N/R	H1888
401	15 x 4	H9220	H595	H3538(L) H3539(R)	In Adj. Pkg.	N/R	H1888

FOR OTHER SYSTEM COMPONENTS SEE APPLICATION SECTION.  
SHOE AND LINING NUMBERS ARE FMSI ASSIGNMENTS.  
FOR SHOE SET AVAILABILITY SEE APPLICATION SECTION AND/OR PRICE SHEET.  
N/R NOT REQUIRED.

# LUCAS-GIRLING REAR DRUM BRAKE

FORD

**AUTOMATIC  
ADJUSTMENT**

**FMSI NO.**

4528-542

4504-543

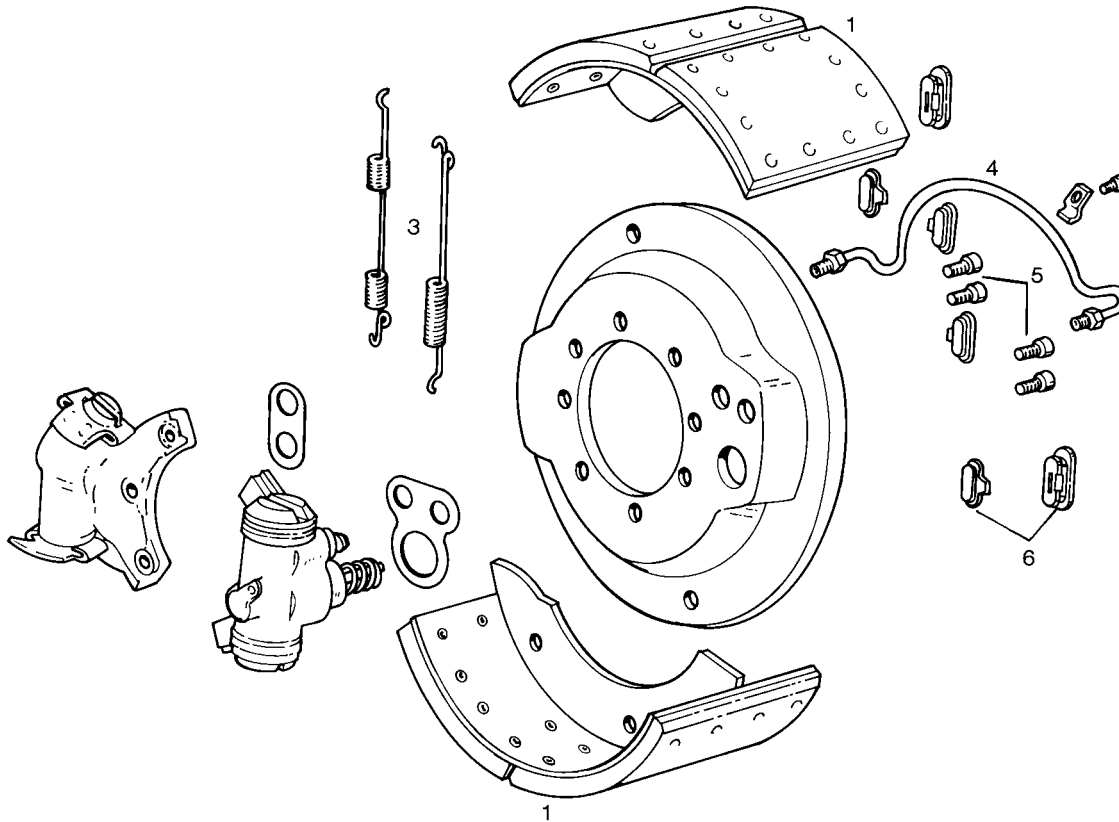
4505-544

**SIZE**

15 x 5

15 x 6

15 x 7



SEE NEXT 2 PAGES FOR FURTHER LUCAS-GIRLING INFORMATION.

ILLUSTRATION OF TYPICAL COMPONENTS

1 SHOE SET	SIZE	2 HARDWARE KIT	3 RETURN SPRG. KIT	4 BRIDGE PIPE PKG.	5 FIXING BOLTS SCREW	6 GROMMET WHEEL
AF542	15 x 5		H618(L)	97103(L)	3630604	3630605
AF543	15 x 6		H619(R)	97104(R)		
AF544	15 x 7		(ALL)	(ALL)	(ALL)	(ALL)

FOR OTHER SYSTEM COMPONENTS SEE APPLICATION SECTION.

SHOE AND LINING NUMBERS ARE FMSI ASSIGNMENTS.

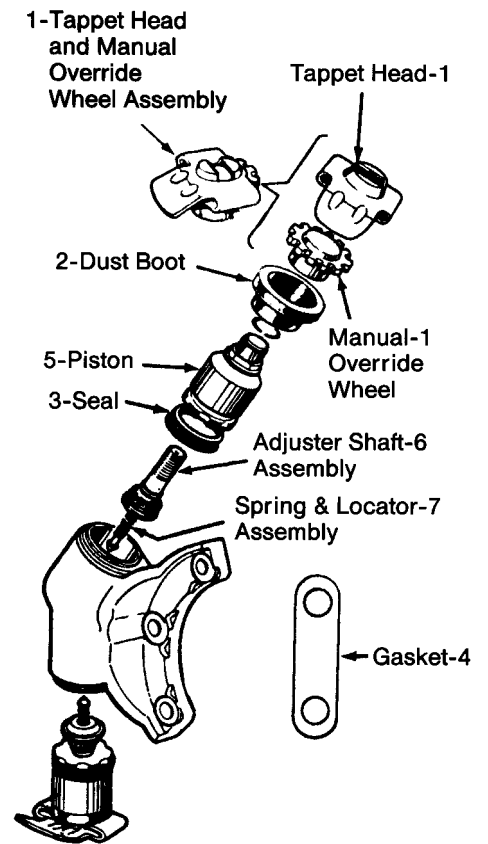
FOR SHOE SET AVAILABILITY SEE APPLICATION SECTION AND/OR PRICE SHEET.



**Lucas\***  
**Reference Information**

**Wheel Cylinder  
Repair Kit Contents**

<b>REPAIR KIT PART NO. 66456 OVERRIDE WHEEL ASSEMBLY CONSISTS OF:</b>		
<b>Key No.</b>	<b>Description</b>	<b>Quantity</b>
1	Tappet Head and Manual Override Wheel Assembly	1
<b>REPAIR KIT PART NO. 66471 1 3/4" WHEEL CYLINDER KIT CONSISTS OF:</b>		
<b>Key No.</b>	<b>Description</b>	<b>Quantity</b>
2	Dust Boot	2
3	Seal	2
4	Gasket	1
<b>REPAIR KIT PART NO. 66470 1 5/8" WHEEL CYLINDER KIT CONSISTS OF:</b>		
<b>Key No.</b>	<b>Description</b>	<b>Quantity</b>
2	Dust Boot	2
3	Seal	2
4	Gasket	1
<b>REPAIR KIT PART NO. 66468 DUST BOOT KIT CONSISTS OF:</b>		
<b>Key No.</b>	<b>Description</b>	<b>Quantity</b>
2	Dust Boot	2
<b>REPAIR KIT PART NO. 66467 1 3/4" ADJUSTER KIT CONSISTS OF:</b>		
<b>Key No.</b>	<b>Description</b>	<b>Quantity</b>
5	Piston	1
6	Adjuster Shaft Assembly	1
7	Spring and Locator Assembly	1
<b>REPAIR KIT PART NO. 66466 1 5/8" ADJUSTER SERVICE KIT CONSISTS OF:</b>		
<b>Key No.</b>	<b>Description</b>	<b>Quantity</b>
5	Piston	1
6	Adjuster Shaft Assembly	1
7	Spring and Locator Assembly	1



**Wheel Cylinder Numerical Listing**

Part No.	Ill. No.	Kit No.	Part No.	Ill. No.	Kit No.
33894 or 33953	76	66477 66474 or 66278 66473 or 66368 66469	33898 & 33899	75	66471 66468 66467 66456 66470
33895 or 33954	76	66478 66474 or 66278 66473 or 66368 66469	33900 & 33901	75	66468 66467 66456 66477 66368 66469 66478 66368 66469
33896 or 33955	76	66475 66474 or 66278 66472 or 66369 66469	33953	75	66477 66368 66469 66478 66368 66469
33897 or 33956	76	66476 66474 or 66278 66472 or 66369 66469	33954	75	66475 66369 66476 66369 66469
			33955	75	66475 66369 66469
			33956	75	66476 66369 66469

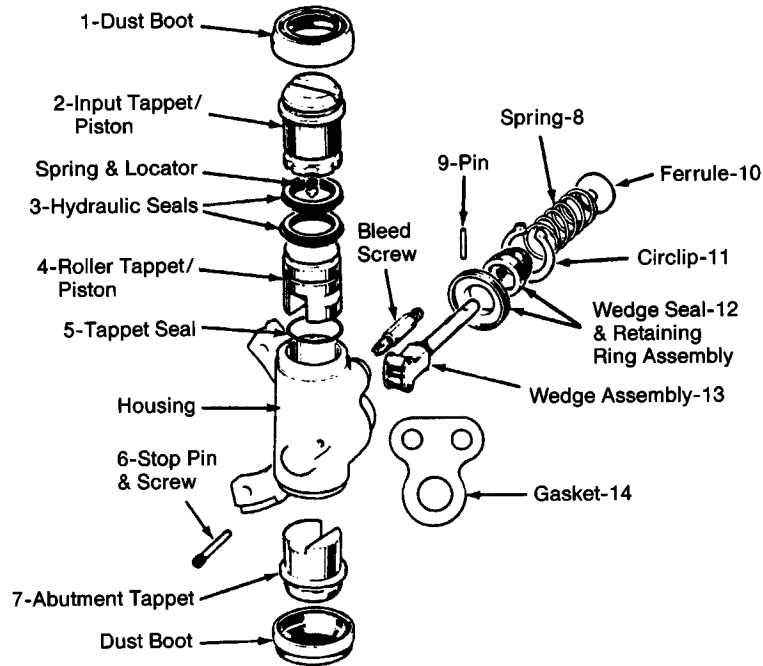
**Wheel Cylinder Numerical Listing**

75		76	
Part No.	Bore Size	Part No.	Bore Size
33898 & 33899 7/16-24	1 3/4"	33894 or 33953 7/16-24	1 3/4"
33900 & 33901 7/16-24	1 5/8"	33895 or 33954 7/16-24	1 3/4"
33953 & 33954 7/16-24	1 3/4"	33896 or 33955 7/16-24	1 5/8"
33955 & 33956 7/16-24	1 5/8"	33897 or 33956 7/16-24	1 5/8"

\*Lucas-Girling type rear brakes as cataloged for late model Ford Truck applications.

# Expander Repair Kit Contents

# Lucas\* Reference Information



### LEFT HAND 1 3/4" EXPANDER KIT PART NO. 66477 CONSISTS OF:

Key No.	Description	Quantity
2	Input Tappet/Piston	1
4	L.H. Roller Tappet/Piston	1
6	Stop Pin & Screw	1
7	L.H. Abutment Tappet	1

### RIGHT HAND 1 3/4" EXPANDER KIT PART NO. 66478 CONSISTS OF:

Key No.	Description	Quantity
2	Input Tappet/Piston	1
4	R.H. Roller Tappet/Piston	1
6	Stop Pin & Screw	1
7	L.H. Abutment Tappet	1

### LEFT HAND 1 5/8" EXPANDER KIT PART NO. 66475 CONSISTS OF:

Key No.	Description	Quantity
2	Input Tappet/Piston	1
4	L.H. Roller Tappet/Piston	1
6	Stop Pin & Screw	1
7	L.H. Abutment Tappet	1

### RIGHT HAND 1 5/8" EXPANDER KIT PART NO. 66476 CONSISTS OF:

Key No.	Description	Quantity
2	Input Tappet/Piston	1
4	R.H. Roller Tappet/Piston	1
6	Stop Pin & Screw	1
7	R.H. Abutment Tappet	1

### DUST BOOT KIT PART NO. 66469 CONSISTS OF:

Key No.	Description	Quantity
1	Dust Boot	2

### EXPANDER WEDGE KIT PART NO. 66474 OR 66278 CONSISTS OF:

Key No.	Description	Quantity
8	Spring	1
9	Pin	1
10	Ferrule	1
11	Circlip	1
13	Wedge Assembly	1
14	Gasket	1

### 1 1/8" EXPANDER SERVICE KIT PART NO. 66368 & 66473 CONSISTS OF:

Key No.	Description	Quantity
1	Dust Boot	2
3	Hydraulic Seals	2
5	Tappet Seal	1
6	Stop Pin & Screw	1
11	Circlip	1
12	Wedge Seal & Retaining Ring Assembly	1
14	Gasket	1

### 1 5/8" EXPANDER SERVICE KIT PART NO. 66369 & 66472 CONSISTS OF:

Key No.	Description	Quantity
1	Dust Boot	2
3	Hydraulic Seals	2
5	Tappet Seal	1
6	Stop Pin & Screw	1
11	Circlip	1
12	Wedge Seal & Retaining Ring Assembly	1
14	Gasket	1

\*Lucas-Girling type rear brakes as cataloged for late model Ford Truck applications.

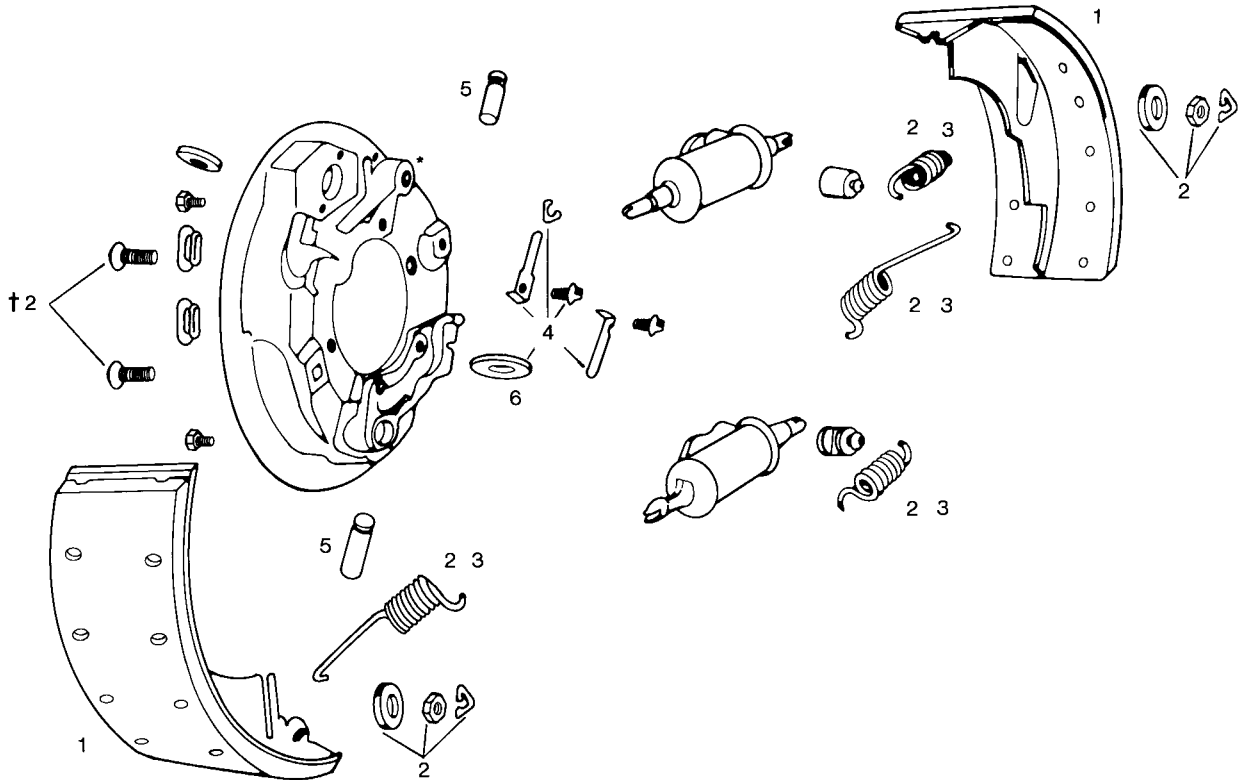
# WAGNER REAR DRUM BRAKE

## INTERNATIONAL

**MANUAL  
ADJUSTMENT**

FMSI NO.  
**1193-130**

SIZE  
**15 x 4**



\*FOR ANCHOR BRACKETS AND PINS SEE PAGE  
†FOR SEPARATE HOLD-DOWN BOLT KITS SEE PAGE

ILLUSTRATION OF TYPICAL COMPONENTS

1 SHOE SET	SIZE	2 HARDWARE KIT	3 RETURN SPRG. KIT	4 ADJUSTER PKG.	5 ADJUSTER SCREW	6 STAR WHEEL
----	15 x 4	----	----	H3518(R & L)	H1860(L) H1861(R)	H1807

FOR OTHER SYSTEM COMPONENTS SEE APPLICATION SECTION.  
SHOE AND LINING NUMBERS ARE FMSI ASSIGNMENTS.  
FOR SHOE SET AVAILABILITY SEE APPLICATION SECTION AND/OR PRICE SHEET.  
---- NOT AVAILABLE.

# WAGNER REAR DRUM BRAKE

DODGE

INTERNATIONAL

**MANUAL  
ADJUSTMENT**

**FMSI NO.**

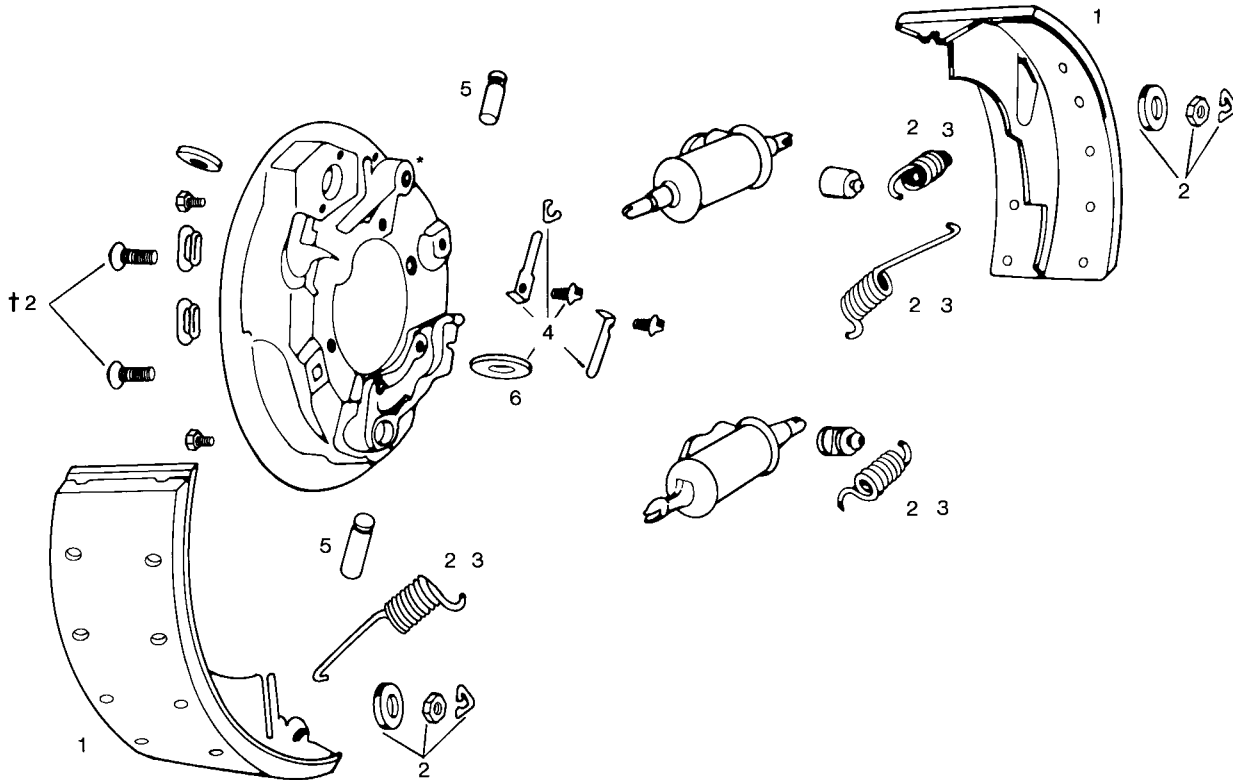
4645-375

4564-93

**SIZE**

15 x 4

15 x 4 1/2



\*FOR ANCHOR BRACKETS AND PINS SEE PAGE  
†FOR SEPARATE HOLD-DOWN BOLT KITS SEE PAGE

ILLUSTRATION OF TYPICAL COMPONENTS

1 SHOE SET	SIZE	2 HARDWARE KIT	3 RETURN SPRG. KIT	4 ADJUSTER PKG.	5 ADJUSTER SCREW	6 STAR WHEEL
----	15 x 4	H9200	H597	H3518(R & L)	H1860(L) H1861(R)	H1807
----	15 x 4 1/2	----	----	H3518(R & L)	H1860(L) H1861(R)	H1807

FOR OTHER SYSTEM COMPONENTS SEE APPLICATION SECTION.  
SHOE AND LINING NUMBERS ARE FMSI ASSIGNMENTS.  
FOR SHOE SET AVAILABILITY SEE APPLICATION SECTION AND/OR PRICE SHEET.  
---- NOT AVAILABLE.

# WAGNER REAR DRUM BRAKE

FORD GMC-CHEV INTERNATIONAL DODGE

**AUTOMATIC  
ADJUSTMENT**

**FMSI NO.**  
1252-346  
1252-379  
4645A-376

**SIZE**  
15 x 5  
15 x 5  
15 x 4

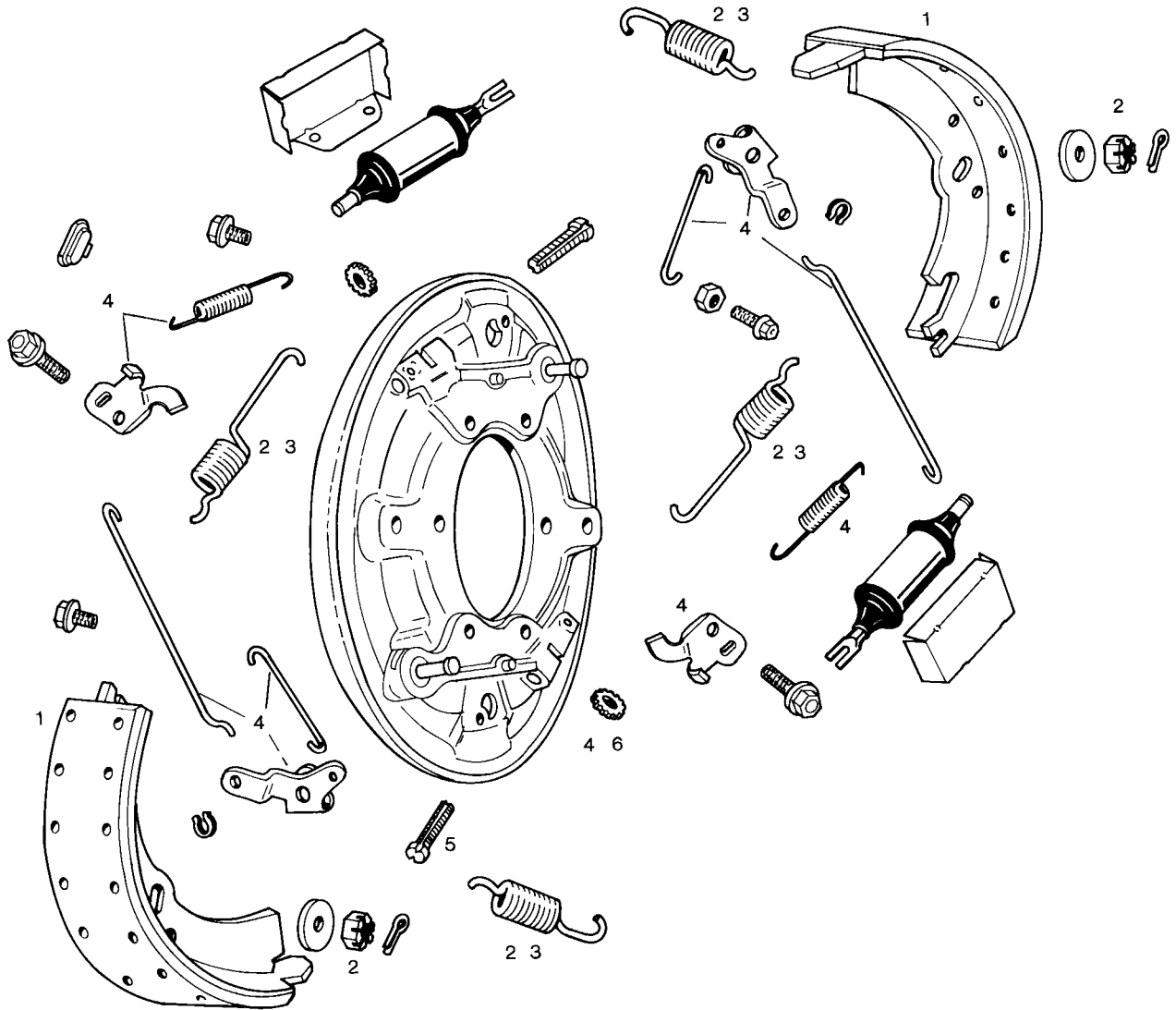


ILLUSTRATION OF TYPICAL COMPONENTS

1 SHOE SET	SIZE	2 HARDWARE KIT	3 RETURN SPRG. KIT	4 ADJUSTER PKG.	5 ADJUSTER SCREW	6 STAR WHEEL
346	15 x 5	H9200	H597	H3540(L) H3541(R)	H1860(L) H1861(R)	H1807
R376	15 x 4	H9200	H597	H3540(L) H3541(R)	H1860(L) H1861(R)	H1807
R379	15 x 5	H9200	H597	---(L) ---(R)	H1860(L) H1861(R)	H1807

FOR OTHER SYSTEM COMPONENTS SEE APPLICATION SECTION.  
SHOE AND LINING NUMBERS ARE FMSI ASSIGNMENTS.  
FOR SHOE SET AVAILABILITY SEE APPLICATION SECTION AND/OR PRICE SHEET.

# WAGNER REAR DRUM BRAKE

## DODGE GMC-CHEV INTERNATIONAL FORD

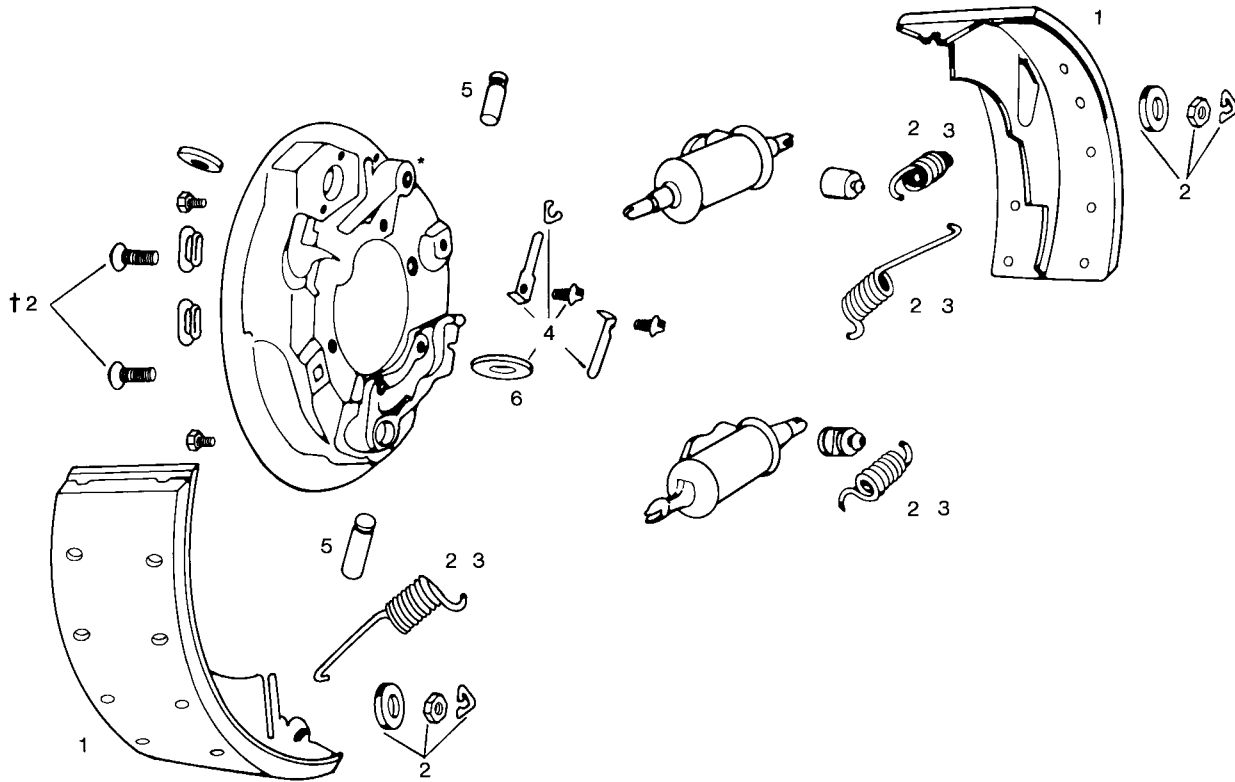
### MANUAL ADJUSTMENT

### FMSI NO.

### SIZE

1252-377  
1252-379  
4596-380  
4597-382

15 x 5  
15 x 5  
15 x 6  
15 x 7



\*FOR ANCHOR BRACKETS AND PINS SEE PAGE  
†FOR SEPARATE HOLD-DOWN BOLT KITS SEE PAGE

ILLUSTRATION OF TYPICAL COMPONENTS

1 SHOE SET	SIZE	2 HARDWARE KIT	3 RETURN SPRG. KIT	4 ADJUSTER PKG.	5 ADJUSTER SCREW	6 STAR WHEEL
----	15 x 5	H9200	H597	H3518(R & L)	H1860(L) H1861(R)	H1807
R379	15 x 5	H9200	H597	--- (L) --- (R)	H1860(L) H1861(R)	H1807
----	15 x 6	H9200	H597	H3518(R & L)	H1860(L) H1861(R)	H1807
----	15 x 7	H9200	H597	H3518(R & L)	H1860(L) H1861(R)	H1807

FOR OTHER SYSTEM COMPONENTS SEE APPLICATION SECTION.  
SHOE AND LINING NUMBERS ARE FMSI ASSIGNMENTS.  
FOR SHOE SET AVAILABILITY SEE APPLICATION SECTION AND/OR PRICE SHEET.

# WAGNER REAR DRUM BRAKE

FORD GMC-CHEV INTERNATIONAL DODGE

**AUTOMATIC  
ADJUSTMENT**

**FMSI NO.**

4596-381

4597-383

**SIZE**

15 x 6

15 x 7

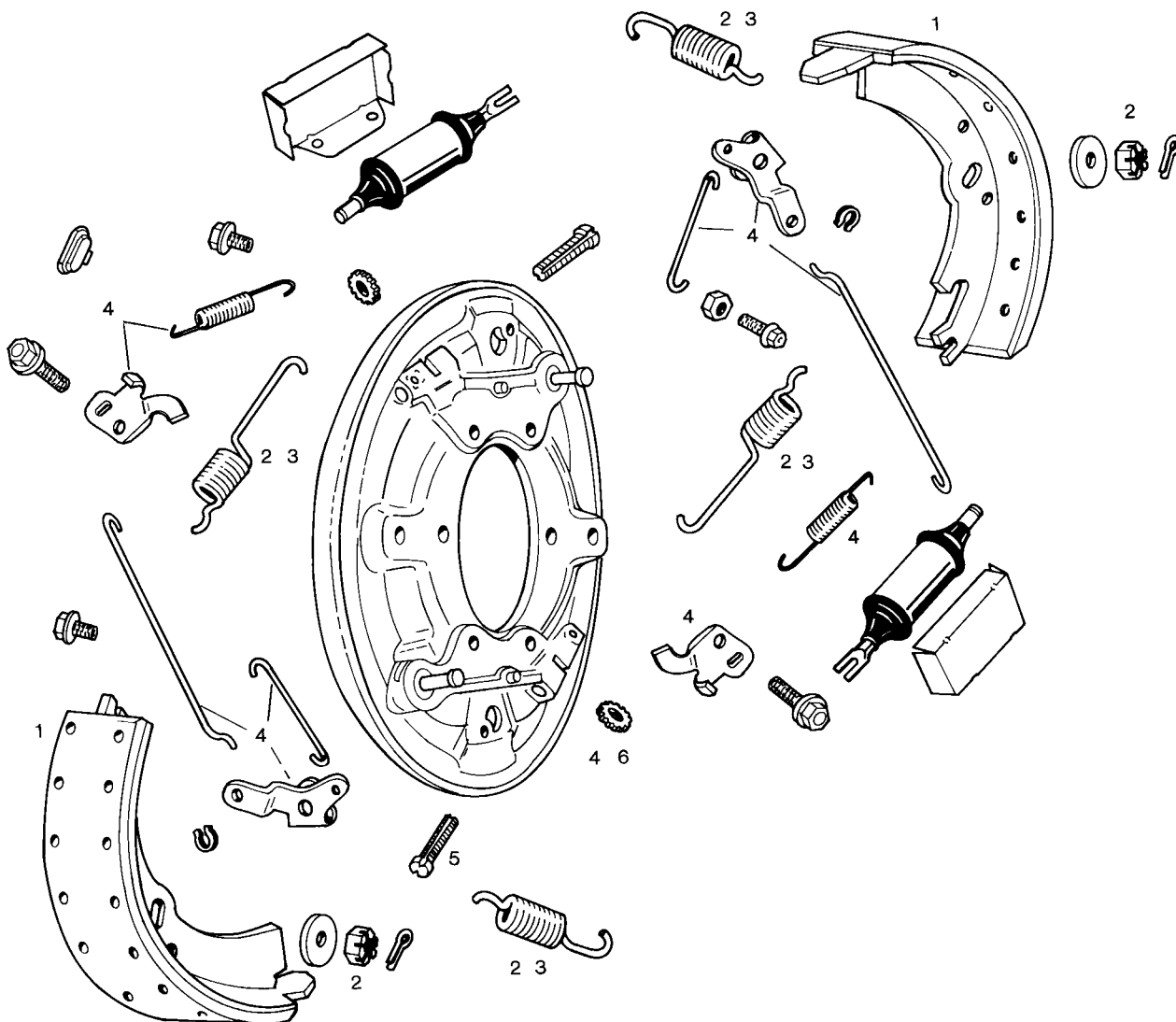


ILLUSTRATION OF TYPICAL COMPONENTS

1 SHOE SET	SIZE	2 HARDWARE KIT	3 RETURN SPRG. KIT	4 ADJUSTER PKG.	5 ADJUSTER SCREW	6 STAR WHEEL
381	15 x 6	H9200 or H9221	H597	H3540(L) H3541(R)	H1860(L) H1861(R)	H1807
383	15 x 7	(See Appl. Sect.)				

FOR OTHER SYSTEM COMPONENTS SEE APPLICATION SECTION.  
SHOE AND LINING NUMBERS ARE FMSI ASSIGNMENTS.  
FOR SHOE SET AVAILABILITY SEE APPLICATION SECTION AND/OR PRICE SHEET.

# WAGNER REAR DRUM BRAKE

DODGE GMC-CHEV INTERNATIONAL FORD

**MANUAL  
ADJUSTMENT**

**FMSI NO.**

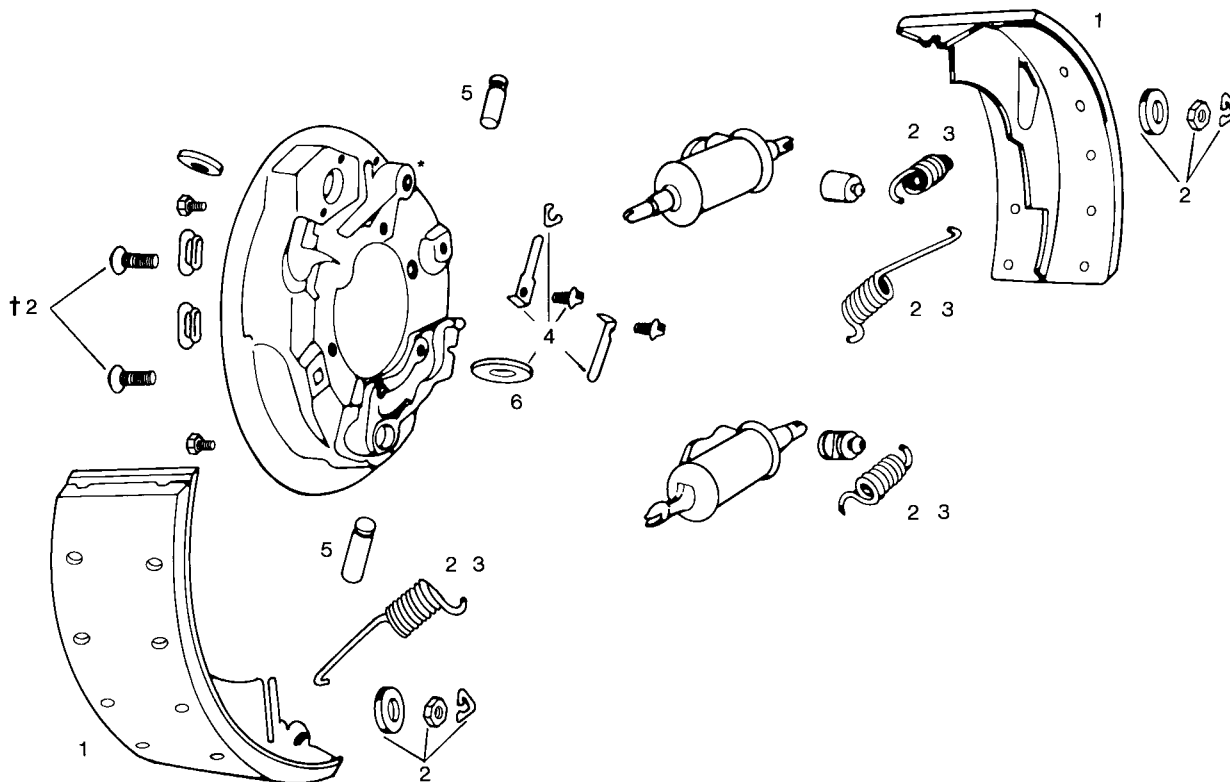
1254-385

1255-386

**SIZE**

16 x 5

16 x 6



\*FOR ANCHOR BRACKETS AND PINS SEE PAGE  
†FOR SEPARATE HOLD-DOWN BOLT KITS SEE PAGE

ILLUSTRATION OF TYPICAL COMPONENTS

1 SHOE SET	SIZE	2 HARDWARE KIT	3 RETURN SPRG. KIT	4 ADJUSTER PKG.	5 ADJUSTER SCREW	6 STAR WHEEL
R385	16 x 5	H9200	H597	H3522(L) H3523(R)	H1865(L) H1864(R)	H1808
R386	16 x 6	H9200	H597			

FOR OTHER SYSTEM COMPONENTS SEE APPLICATION SECTION.  
SHOE AND LINING NUMBERS ARE FMSI ASSIGNMENTS.  
FOR SHOE SET AVAILABILITY SEE APPLICATION SECTION AND/OR PRICE SHEET.



# WAGNER REAR DRUM BRAKE

FORD GMC-CHEV INTERNATIONAL DODGE

**AUTOMATIC  
ADJUSTMENT**

**FMSI NO.  
1254-385**

**SIZE  
16 x 5**

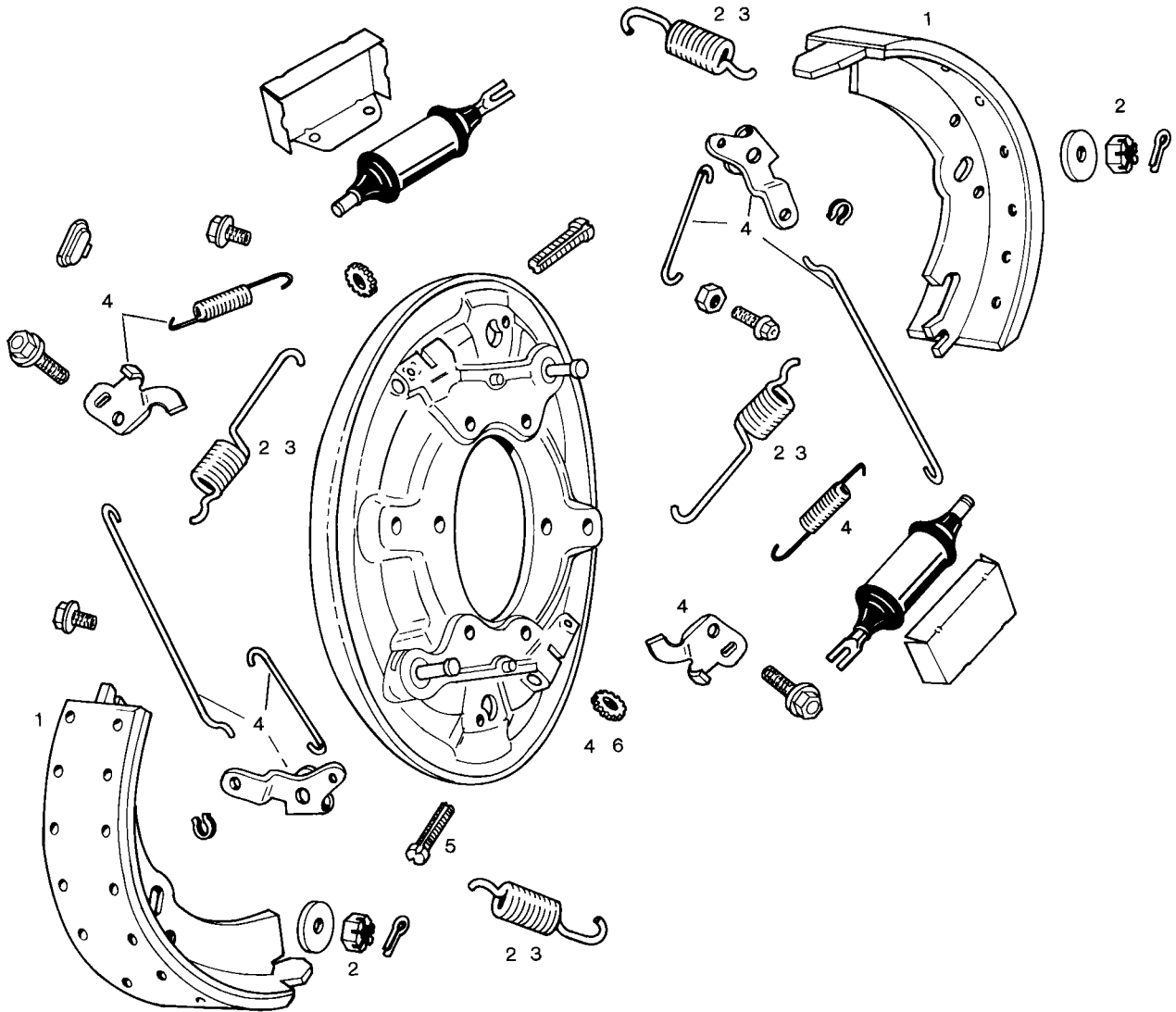


ILLUSTRATION OF TYPICAL COMPONENTS

1 SHOE SET	SIZE	2 HARDWARE KIT	3 RETURN SPRG. KIT	4 ADJUSTER PKG.	5 ADJUSTER SCREW	6 STAR WHEEL
R385	16 x 5	H9200	H597	H3522(L) H3523(R)	H1865(L) H1864(R)	H1808

FOR OTHER SYSTEM COMPONENTS SEE APPLICATION SECTION.  
SHOE AND LINING NUMBERS ARE FMSI ASSIGNMENTS.  
FOR SHOE SET AVAILABILITY SEE APPLICATION SECTION AND/OR PRICE SHEET.

# WAGNER REAR DRUM BRAKE

FORD GMC-CHEV INTERNATIONAL DODGE

**AUTOMATIC  
ADJUSTMENT**

**FMSI NO.  
1255-386**

**SIZE  
16 x 6**

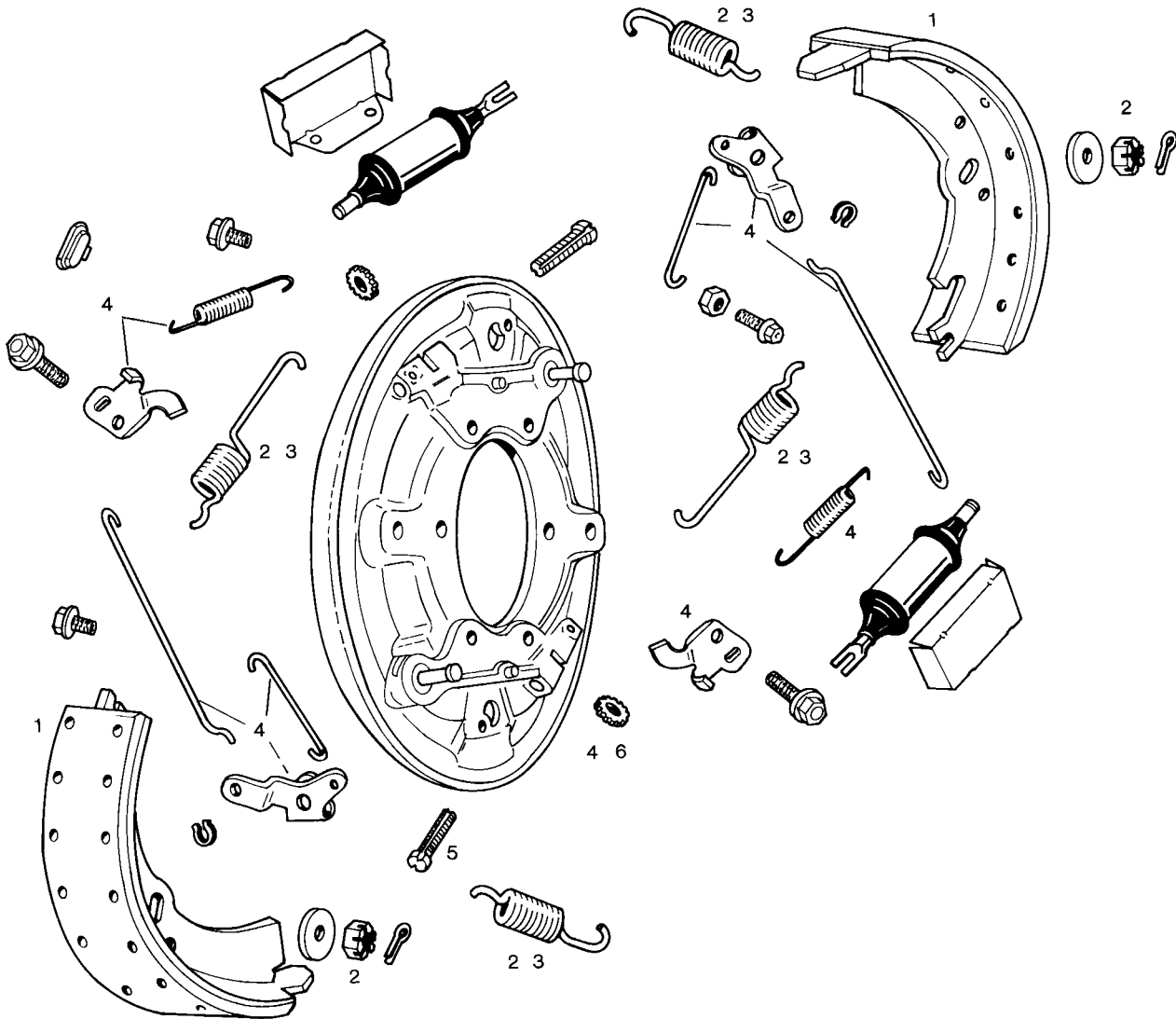


ILLUSTRATION OF TYPICAL COMPONENTS

1 SHOE SET	SIZE	2 HARDWARE KIT	3 RETURN SPRG. KIT	4 ADJUSTER PKG.	5 ADJUSTER SCREW	6 STAR WHEEL
R386	16 x 6	H9200 or H9221 (See Appl. Sect.)	H597	H3522(L) H3523(R)	H1865(L) H1864(R)	H1808

FOR OTHER SYSTEM COMPONENTS SEE APPLICATION SECTION.  
SHOE AND LINING NUMBERS ARE FMSI ASSIGNMENTS.  
FOR SHOE SET AVAILABILITY SEE APPLICATION SECTION AND/OR PRICE SHEET.